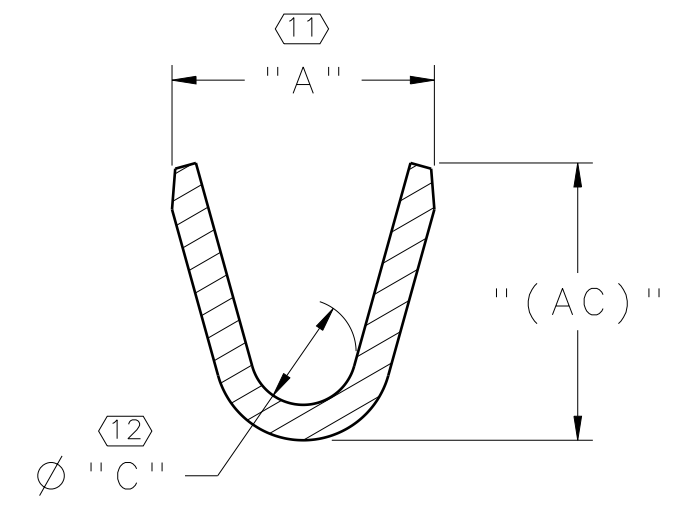
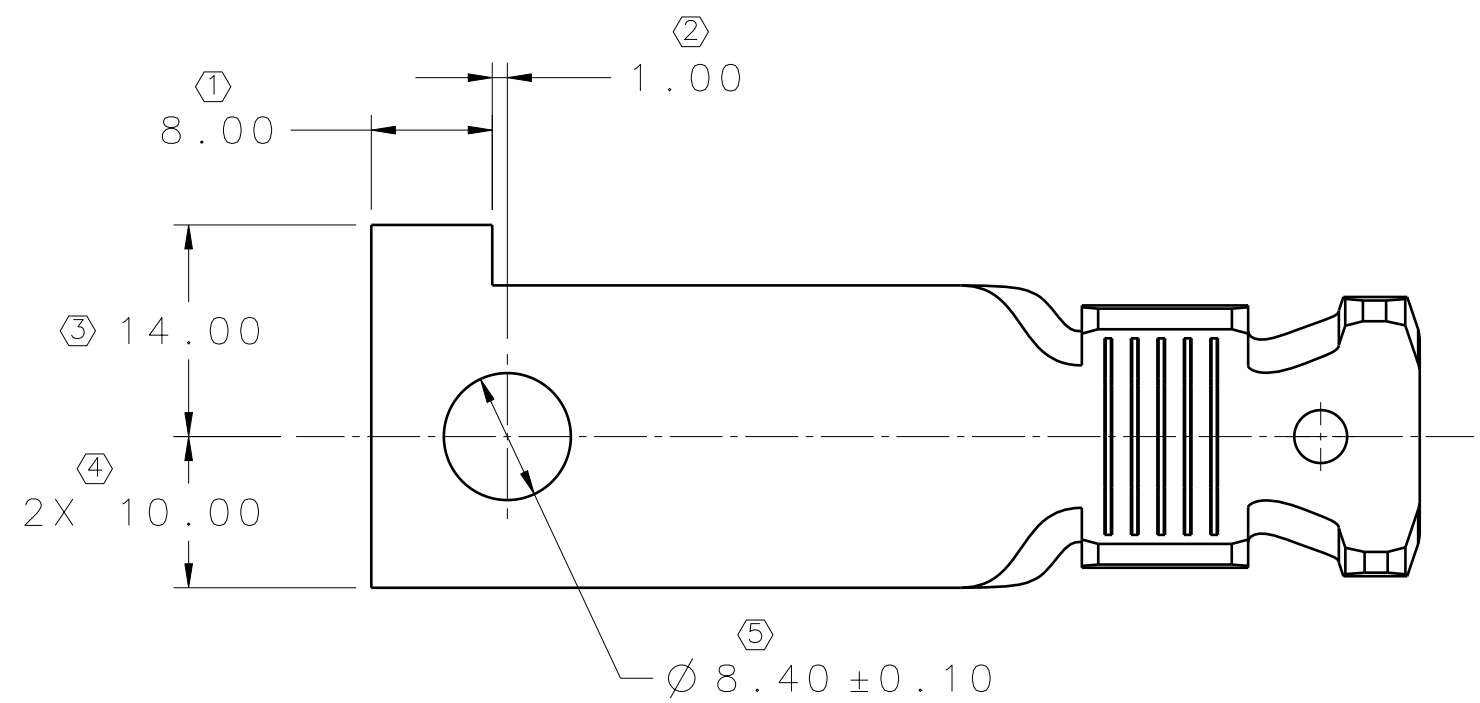
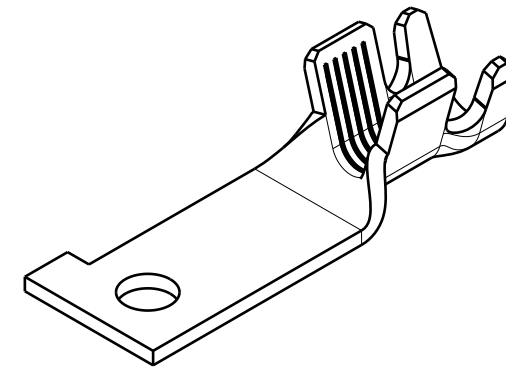
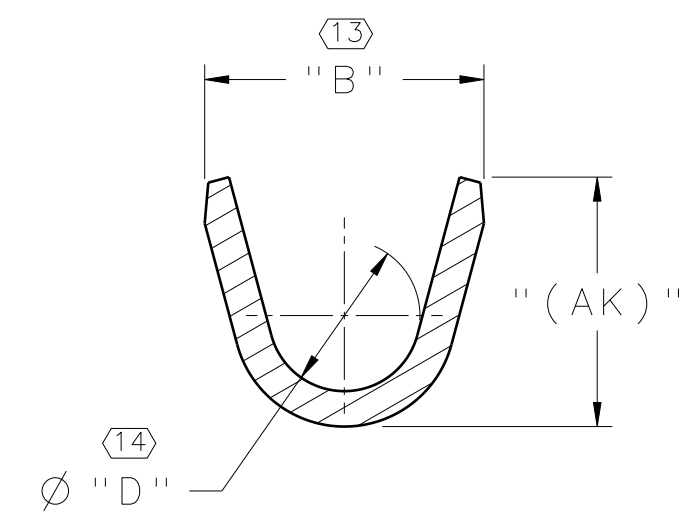
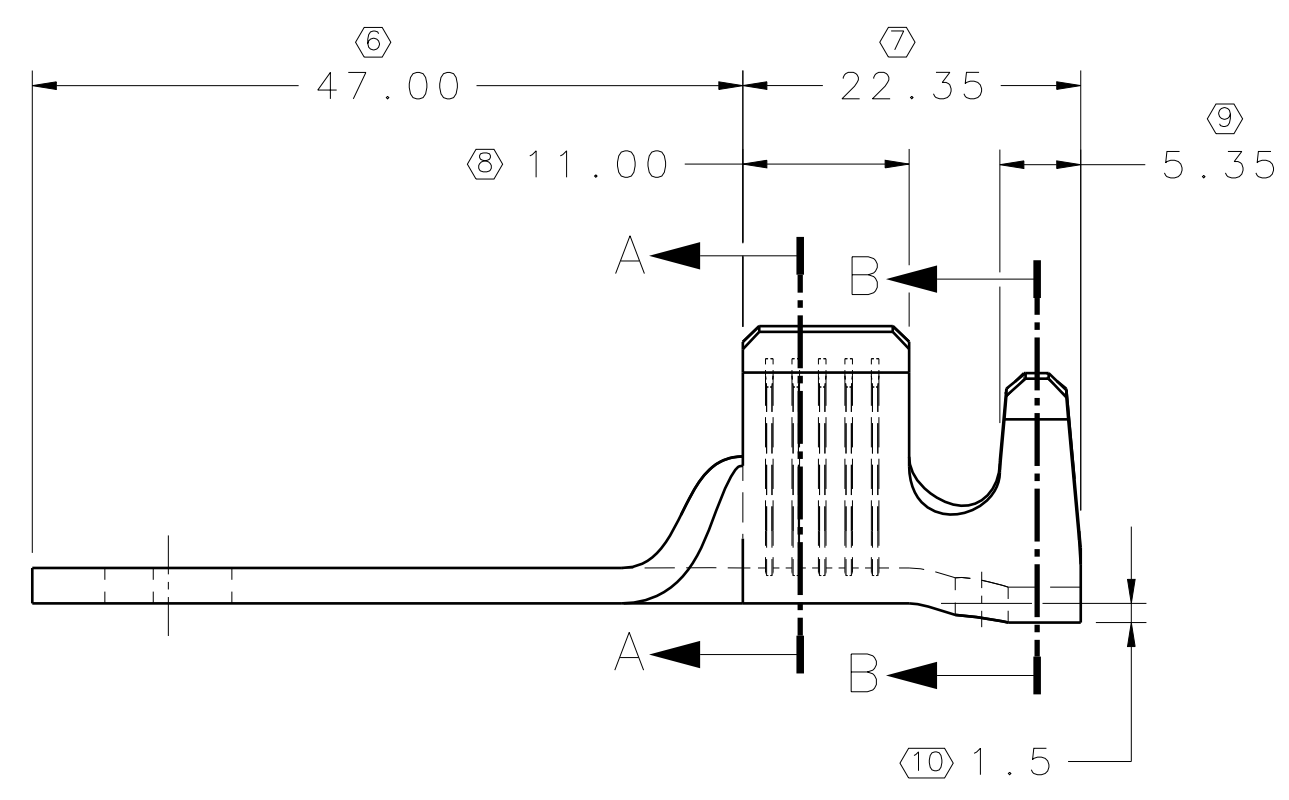


LEAR/SEM P/N	T&C P/N	WIRE RANGE		A	B	ØC	ØD	(AC)	(AK)	MATERIAL	PLATING
		mm ²	AWG								
E13116200	110235-XS01	35.0 / 21.0	2 / 4	16.60	18.02	7.00	10.00	18.34	16.50	CuZn	-
E13116400	110235-XS17									CuZn	Post-Sn
E13116500	110635-XS01	13.5 / 8.5	6 / 8	12.76	13.30	5.65	6.70	14.10	12.47	CuZn	-
E13116600	110635-XS17									CuZn	Post-Sn

REV.	ZONE	DESCRIPTION	CS/REL NO.	DATE	DESIGNER	CHECKER
AA	--	INITIAL RELEASE	XX.XXX	2018/01/18	RAUL.B	T.RAVINDRA



SECTION VIEW A-A



SECTION VIEW B-B

NOTES:

1. GENERAL TOLERANCE
 - 1.1 ONE PLACE : ± 0.5
 - 1.2 TWO PLACE : ± 0.30
 - 1.3 ANGULAR PLACE : ± 3°
2. 0.50 MAX. CUT OFF
3. MATERIAL THICKNESS: 2.30
4. PARTS SUPPLIED IN LOOSE PIECE

ANGLE PROJECTION	MATERIAL: SEE TABLE	WEIGHT CAD: N/A	VOLUME CAD: N/A
NA	FINISH / SURFACE: SEE TABLE		
	COLOR: N/A		
NOT USED	SCALE: 2:1		
	START DATE: 2017/09/12		
	DRAWN: R.BERAME	MISC / CROSS CARLINE STARTER EYELET COMMON	
	APPROVERS: ENGR: F.ABDISHI CHECKER: T.S.RAVINDRA APPROVER: A.BUTCHER		
	CAD DIRECTORY / LOCATION: SEM		
	DRAWING FILE NAME: E13116400-AA_DR00.CATDrawing		
	MODEL FILE NAME: E13116400.CATPart		
LAST UPDATE	SEM DOCUMENT ID / DRAWING NUMBER	REV.	SHEET OF TYPE
2018/01/18	D00463325 / 110235-XS17	AA	1 1 CG
LAST USED	CONFIDENTIAL - THIS DRAWING AND ALL INFORMATION DISCLOSED HEREIN ARE OWNED BY LEAR CORPORATION AND ARE NOT TO BE DISTRIBUTED OR DISSEMINATED IN ANY MANNER UNLESS EXPRESSLY AUTHORIZED IN WRITING BY LEAR CORPORATION		
14			