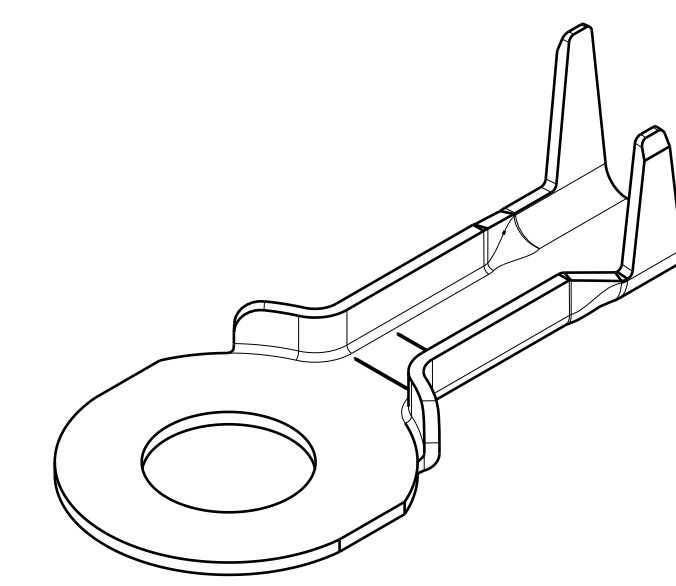
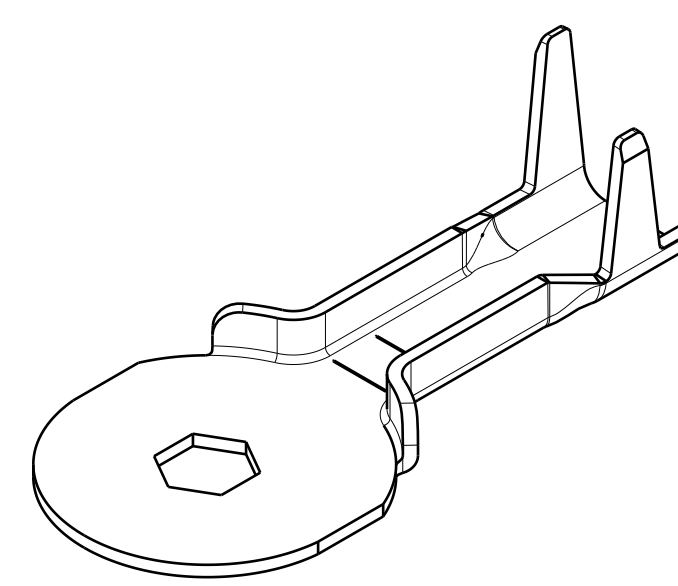


Lear / SEM P/N	T&C P/N	Eyelet Type	HOLE TYPE	Ø A HOLE SIZE	WIRE BUNDLE SIZE	MAX NUMBER OF WIRES	D	R RADIUS	Z LENGTH W/O TAB	J OVERALL LENGTH W/TAB	WELD AREA			ANTI ROTATION			PLATING	
											B TROUGH WIDTH	C INSUL. WIDTH	G INSUL. HEIGHT	K TAB LENGTH	L TAB POSITION	W TAB WIDTH		
320257HL5	101925-SDF09	1a	1	6.3	2.5-6.5	1-12	22.9	11.50	51.50	-	-	4.00	10.3	11.3	-	-	-	4A
320151CX2	100725-UWF09			6.3	5.0-20	1-20	22.9	11.50	51.50	-	-	7.00	13.0	13.9	-	-	-	
320257HH4	100731-USW09			8.5	5.0-20	1-20	22.9	11.50	51.50	-	-	7.00	13.0	13.9	-	-	-	
320257HK7	100745-XPL09			11.5	5.0-20	1-20	22.9	11.50	51.50	-	-	7.00	13.0	13.9	-	-	-	
320257HJ9	100725-USW09	1b	2	6.4	5.0-20	1-20	22.9	11.50	51.50	-	-	7.00	13.0	13.9	-	-	-	4B
320151FQA	101925-UWE09			6.3	2.5-6.5	1-12	22.9	11.50	51.50	-	-	4.00	10.3	11.3	-	-	-	
E14808200	101925-UWE229			6.3	2.5-6.5	1-12	22.9	11.50	51.50	-	-	4.00	10.3	11.3	-	-	-	
E14808400	100725-UWE229			6.3	5.0-20	1-20	22.9	11.50	51.50	-	-	7.00	13.0	13.9	-	-	-	
320151F06	100725-UWE09	2a	1	6.3	5.0-20	1-20	22.9	11.50	51.50	-	-	7.00	13.0	13.9	-	-	-	4A
E07462400	101931-UMG76			8.1	2.5-6.5	1-12	22.9	11.50	51.50	-	-	4.00	10.3	11.3	-	-	-	
E07462300	100731-UMG76			8.1	5.0-20	1-20	22.9	11.50	51.50	-	-	7.00	13.0	13.9	-	-	-	
320151F0Y	101925-UWR09			6.3	2.5-6.5	1-12	22.9	11.50	51.50	56.50	4.00	10.3	11.3	5.50	15.50	5.00	-	
320151F0Z	100725-UWR09	2b	1	6.3	5.0-20	1-20	22.9	11.50	51.50	-	-	7.00	13.0	13.9	-	-	-	4A
320151F10	100731-UWR09			8.5	5.0-20	1-20	22.9	11.50	51.50	56.50	7.00	13.0	13.9	5.50	15.50	5.00	-	
320151F12	100745-UWR09			11.5	5.0-20	1-20	22.9	11.50	51.50	56.50	7.00	13.0	13.9	5.50	15.50	5.00	-	
320151F11	100725-UWT09			6.4	5.0-20	1-20	22.9	11.50	51.50	56.50	7.00	13.0	13.9	5.50	15.50	5.00	-	
E01941800	101925-USR09	2c	1	6.3	2.5-6.5	1-12	19.3	9.50	49.40	-	-	4.00	10.3	11.3	-	-	-	4B
E05176200	101925-USR76			6.3	2.5-6.5	1-12	19.3	9.50	49.40	-	-	4.00	10.3	11.3	-	-	-	
E02984900	100725-USR09			6.3	5.0-20	1-20	19.3	9.50	49.40	53.20	4.00	10.3	13.0	13.9	5.50	12.30	4.00	
E10506400	100725-USR229			6.3	5.0-20	1-20	19.3	9.50	49.40	53.20	7.00	13.0	13.9	5.50	12.30	4.00	-	
E05176300	100725-USR76	3	1	6.3	5.0-20	1-20	19.3	9.50	49.40	-	-	7.00	13.0	13.9	-	-	-	4A
E02663200	101925-STT09			6.3	2.5-6.5	1-12	22.9	9.70	47.69	53.30	4.00	10.3	11.3	8.70	12.30	7.00	-	
E15307000	101925-STT229			6.3	2.5-6.5	1-12	22.9	9.70	47.69	53.30	4.00	10.3	11.3	8.70	12.30	7.00	-	
E05176600	101931-SLT09			8.5	2.5-6.5	1-12	22.9	9.70	47.69	53.30	4.00	10.3	11.3	9.80	14.00	5.00	-	
E05176400	101931-SWT09	3	1	8.5	2.5-6.5	1-12	22.9	9.70	47.69	-	-	5.00	13.0	13.9	-	-	-	4B
E00001191	100725-SWT09			6.3	5.0-20	1-20	22.9	9.70	47.69	53.30	7.00	13.0	13.9	8.70	12.30	5.00	-	
E10176700	100725-SWT229			6.3	5.0-20	1-20	22.9	9.70	47.69	53.30	7.00	13.0	13.9	8.70	12.30	5.00	-	
E02663100	100725-STT09			6.3	5.0-20	1-20	22.9	9.70	47.69	53.30	7.00	13.0	13.9	8.70	12.30	7.00	-	
E05151500	100731-SLT09	3	1	8.5	5.0-20	1-20	22.9	9.70	47.69	-	-	5.00	13.0	13.9	-	-	-	4A
E04260100	100731-SWT09			8.5	5.0-20	1-20	22.9	9.70	47.69	53.30	7.00	13.0	13.9	9.80	14.00	5.00	-	
E05176800	100745-SWT09			11.5	5.0-20	1-20	22.9	9.70	47.69	53.30	7.00	13.0	13.9	8.70	12.30	5.00	-	
E01255000	101925-UWC09			6.3	2.5-6.5	1-12	22.9	11.50	51.50	-	-	4.00	10.3	11.3	5.00	13.30	5.00	
E01870000	101931-WWC09	3	1	8.5	2.5-6.5	1-12	22.9	11.50	51.50	-	-	4.00	10.3	11.3	5.00	13.30	5.00	-
E00654100	100725-UWC09			6.3	5.0-20	1-20	22.9	11.50	51.50	-	-	7.00	13.0	13.9	5.00	13.30	5.00	
E01870800	100731-WWC09			8.5	5.0-20	1-20	22.9	11.50	51.50	-	-	7.00	13.0	13.9	5.00	13.30	5.00	
E10177000	101925-UWC229			6.3	2.5-6.5	1-12	22.9	11.50	51.50	-	-	4.00	10.3	11.3	5.00	13.30	5.00	
E10176800	100731-WWC229			8.5	5.0-20	1-20	22.9	11.50	51.50	-	-	7.00	13.0	13.9	5.00	13.30	5.00	

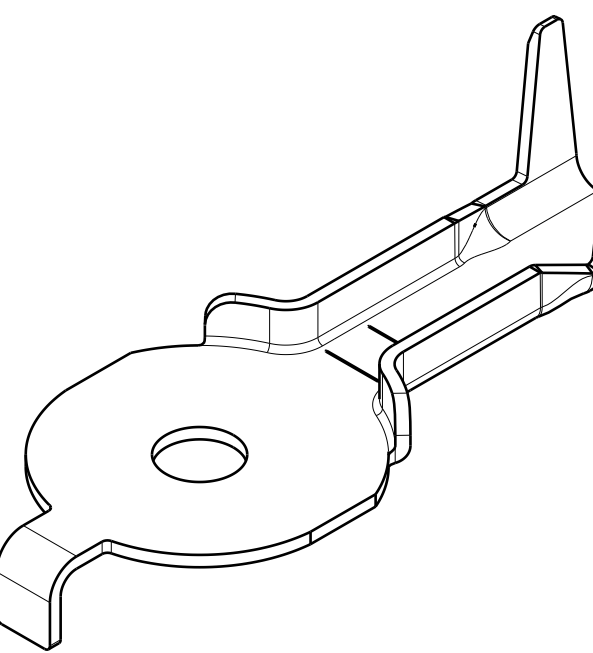
TYPE 1a  
(HOLE TYPE 1, SHOWN)



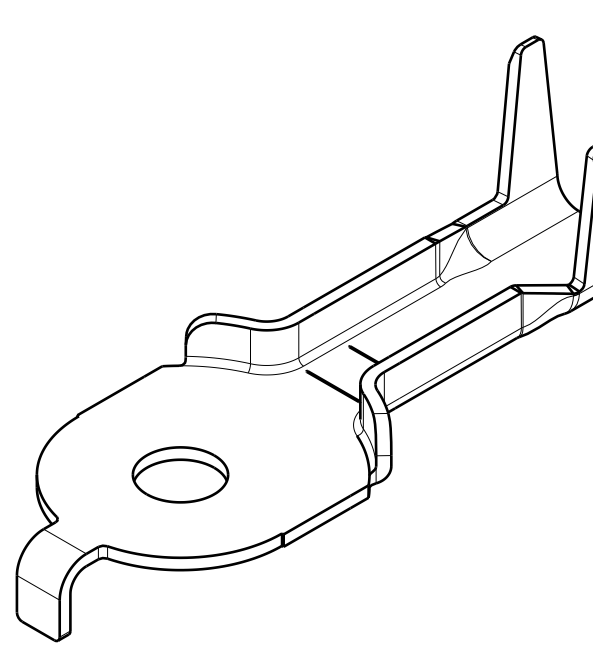
TYPE 1b  
(HOLE TYPE 3, SHOWN)



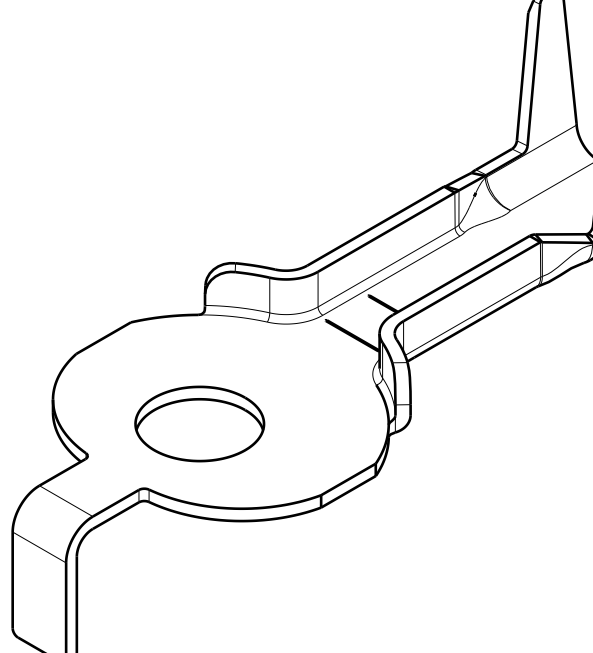
TYPE 2a  
(HOLE TYPE 1, SHOWN)



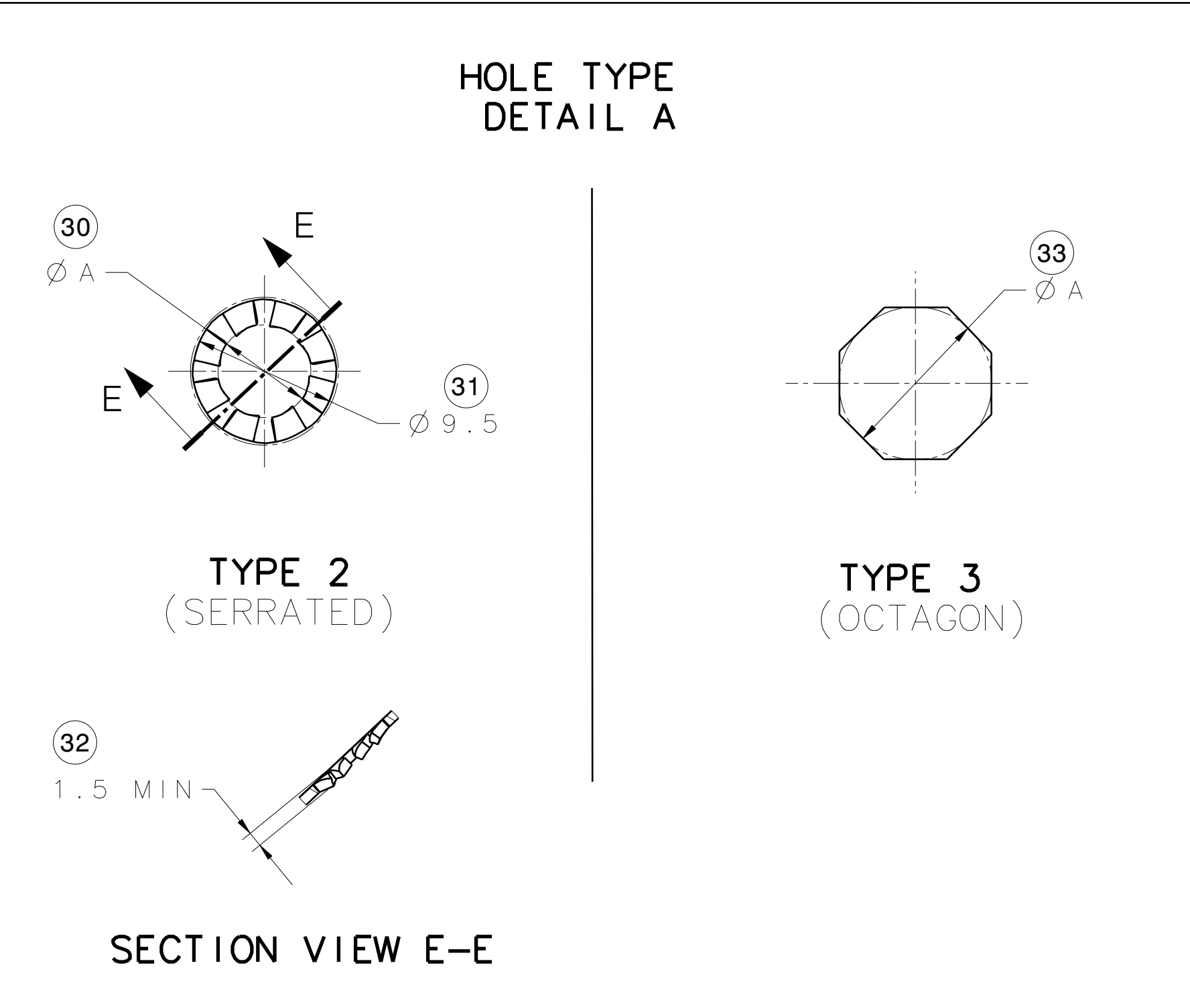
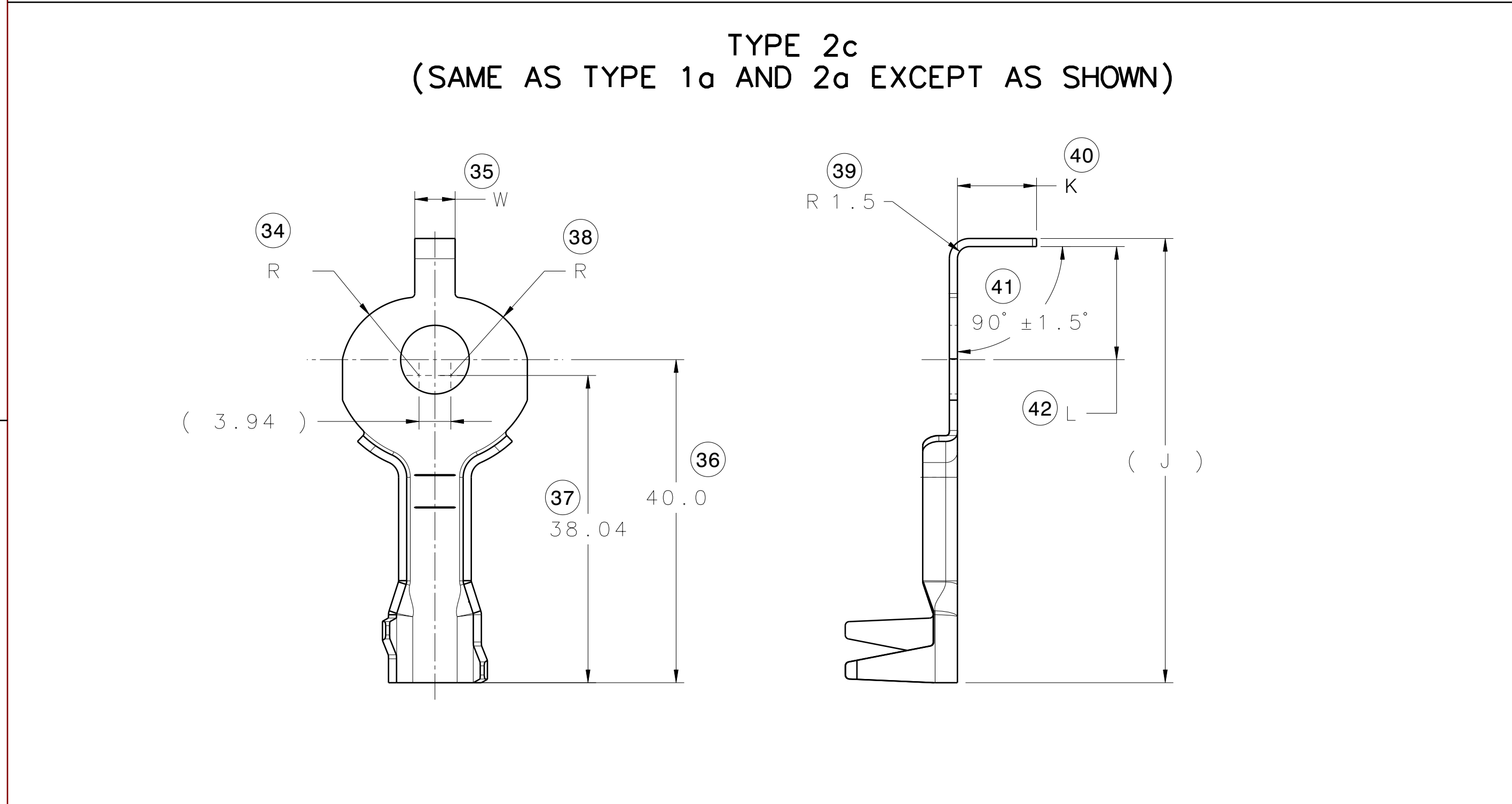
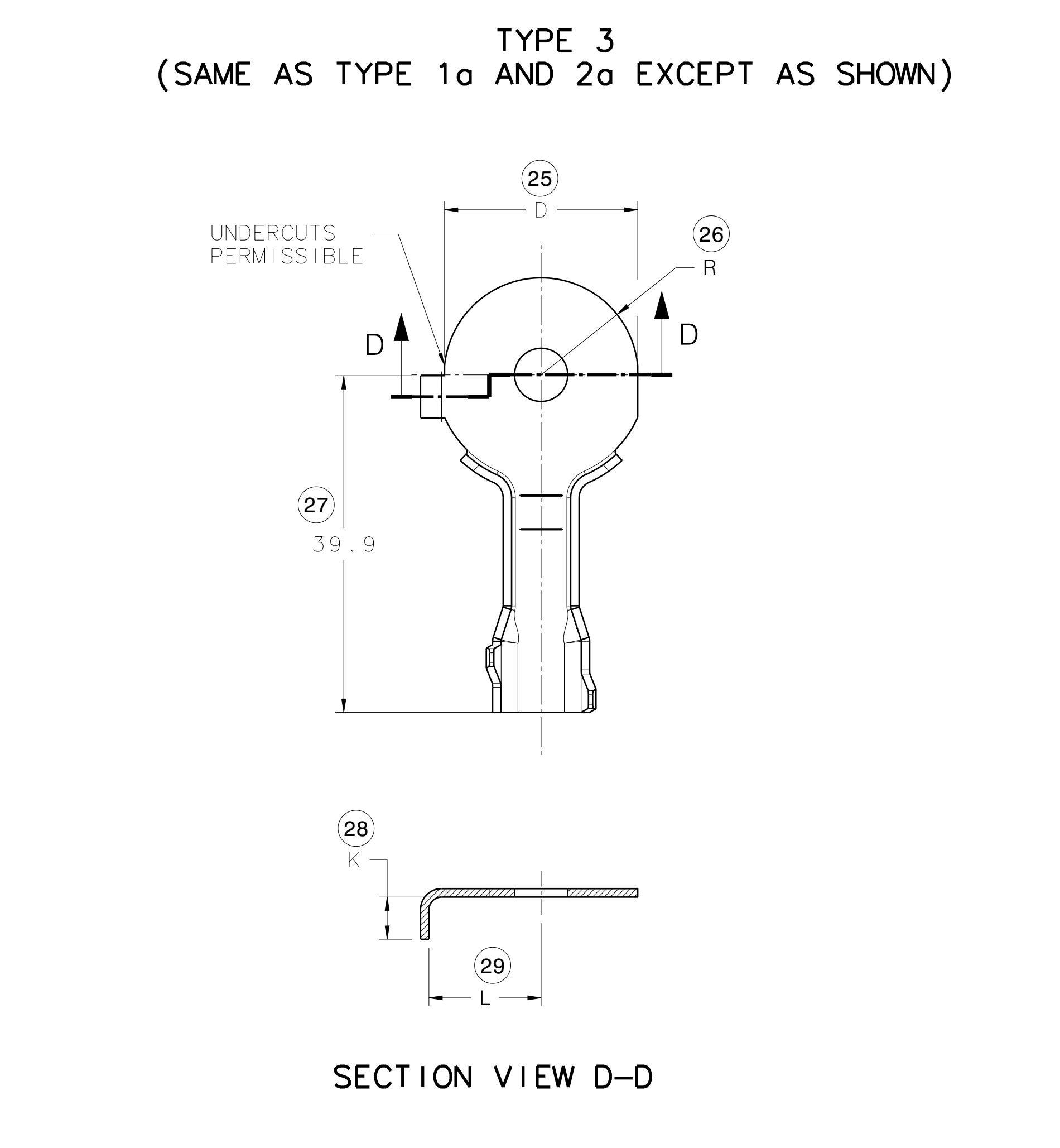
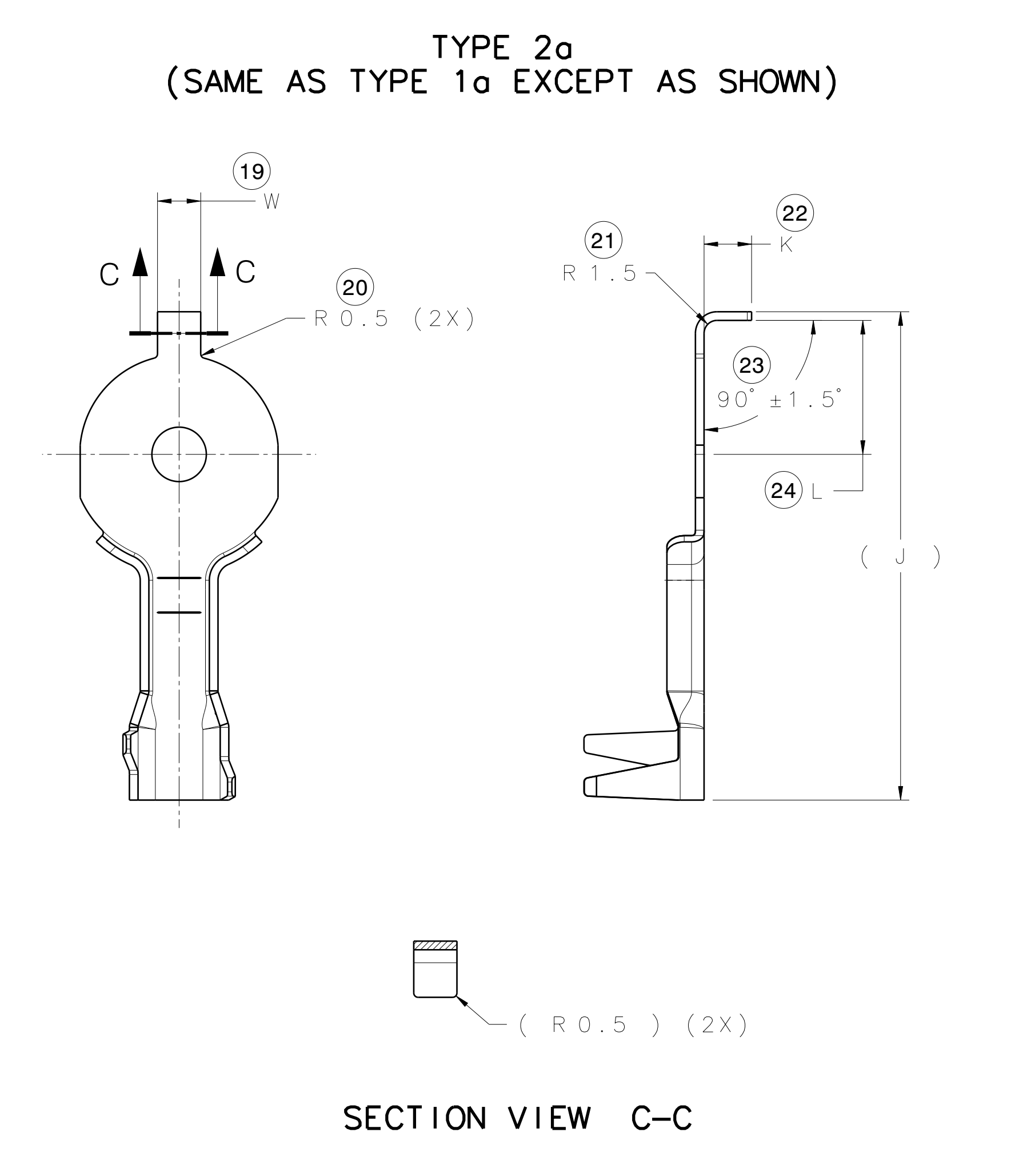
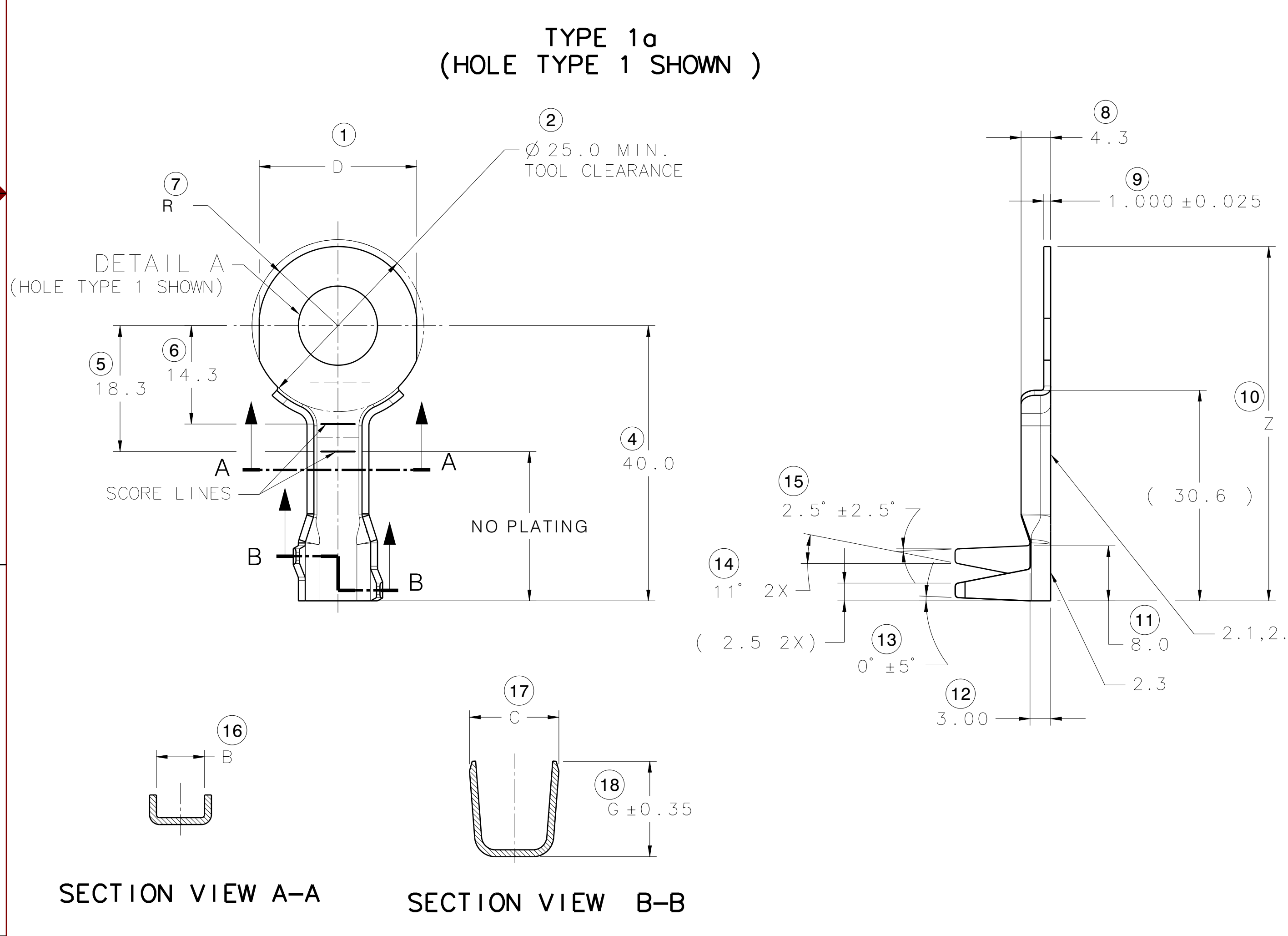
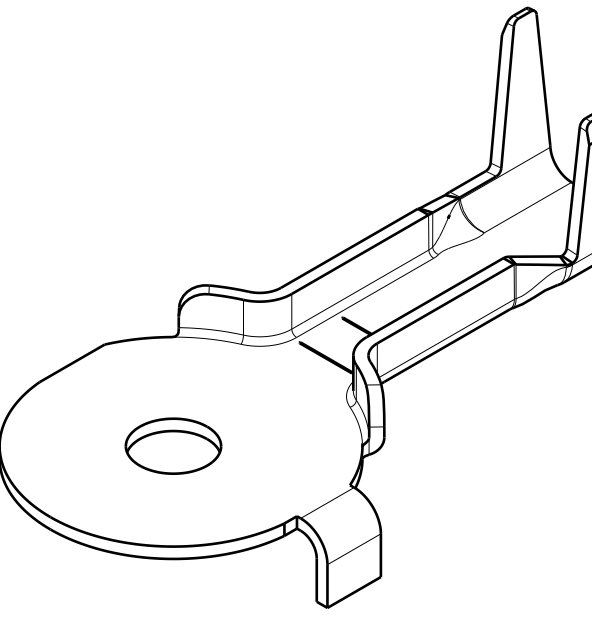
TYPE 2b  
(HOLE TYPE 1, SHOWN)



TYPE 2c  
(HOLE TYPE 1, SHOWN)



TYPE 3  
(HOLE TYPE 1, SHOWN)



NOTES:

- GENERAL TOLERANCE  
1.1 ONE PLACE : ± 0.3  
1.2 TWO PLACE : ± 0.15  
1.3 ANGULAR PLACE : ± 3°
- TOOL INSERTS  
2.1 LEAR LOGO-LR  
2.2 GRIP CODE  
2.3 DATE CODE:WEEK OF MANUFACTURE
- MATERIAL: COPPER ALLOY.
- 4A.FINISH: UNPLATED
- 4B.SELECTIVELY PRE-PLATED TIN.
- NO HEAVY METALS ARE PERMITTED (HEXAVALENT CHROMIUM, LEAD, CADMIUM, ETC) ON PARTS, COMPONENTS OR PROCESSES.
- PARTS ARE LOOSE PIECE.
- 0.5 MAX. CUT OFF.

REV.	ZONE	DESCRIPTION	CS/REL NO.	DATE	DESIGNER	CHECKER
AA		INITIAL RELEASE	CSF 322218	2016/01/06	B.MARTIN	OF
AB		REVISED DRAWING FORMAT REVISED TABLE ORGANIZATION ADDED PART NO. E10176700, E10176800, & E10177000 & E10506400 SIMILAR TO E00001191, E01870800, E02984900 & E02984900 RESPECTIVELY EXCEPT FINISH.	CSF 341235	2017/01/16	O.J.BELUC	S.RAHMAN
AC		REMOVED NOTE #5. REVISED CHART TO REMOVED MATERIAL FROM THE CHART AND ADDED TO NOTE TYPE 1 IS SPLIT INTO 2, TYPE 1a AND TYPE 1b ADDED TYPE 2c DETAILED VIEW	CSF 348899	2017/06/13	O.J.BELUC	S.RAHMAN
AD	G4	REMOVED PLATING AREA CALL OUT DIMENSION 19.7. REMOVED DIM (10.5 MIN). ADDED NO PLATING AREA CALL OUT.	CSF 325956	2017/10/04	C.9000	S.RAHMAN
AE	E8	ADDED PART NUMBERS E14808200 AND E14808400 SAME AS 320151FQA AND 320151F06 EXCEPT SELECTIVELY PRE-PLATED TIN	CSF 355371	2018/01/30	C.9000	S.RAHMAN
AF	E7	ADDED NEW PART NUMBER E15307000, SAME AS E02663200 EXCEPT SELECTIVELY PRE-PLATED TIN	CSF 356177	2018/03/07	D.LARIOSA	S.RAHMAN

ANGLE PROJECTION	MATERIAL FINISH/SURFACE	SEE TABLE	SEE TABLE	WEIGHT CAD	VOLUME CAD
NA		N/A	N/A	N/A	N/A
NOT USED	SCALE: 2:1				
START DATE	2016/05/23	TITLE		ULTRASONIC WELD EYELET	
DRAWN	TSR	APPROVERS		ENGR. S.RAHMAN CHECKER: M. GLUCK APPROVER: D.MENZIES	
CAD DIRECTORY / LOCATION	DRAWING FILE NAME: 100745-XPL09CG AF 899-0002 CAD100745				
LAST UPDATE	SEM DOCUMENT ID / DRAWING NUMBER	REV	SHEET	OF	TYPE
2018/03/07	100745-XPL09CG	AF	1	1	CG
LAST USED	CONFIDENTIAL - THIS DRAWING AND ALL INFORMATION DISCLOSED HEREIN ARE OWNED BY LEAR CORPORATION AND ARE NOT TO BE DISTRIBUTED OR DISSEMINATED IN ANY MANNER UNLESS EXPRESSLY AUTHORIZED IN WRITING BY LEAR CORPORATION				