

CHART 3

ASSEMBLY PN	A±0.20
E02393800	9.00
E02678700	9.00
E02394200	8.81

CARRIER DIMENSIONS
Scale: 1:1

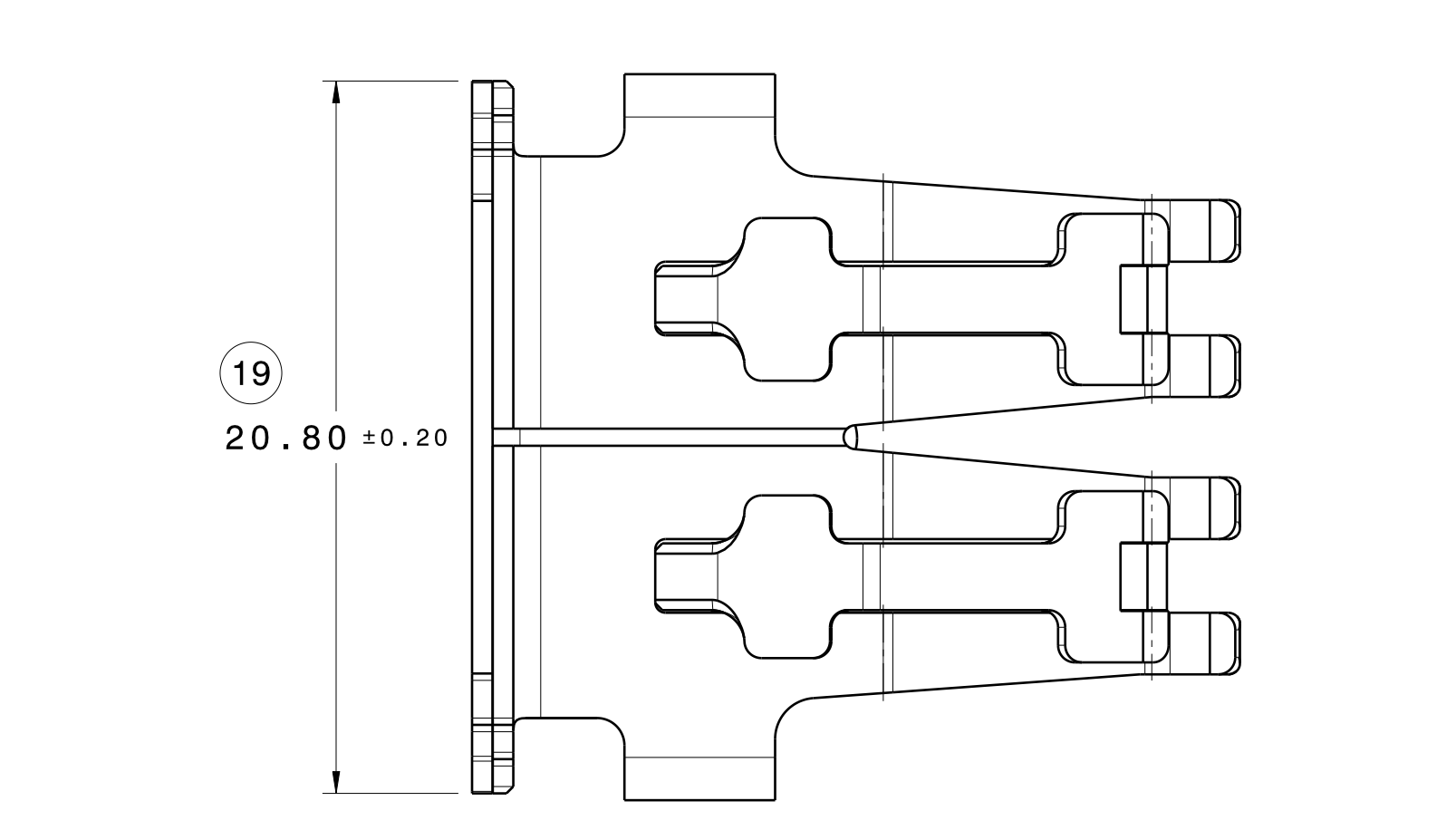
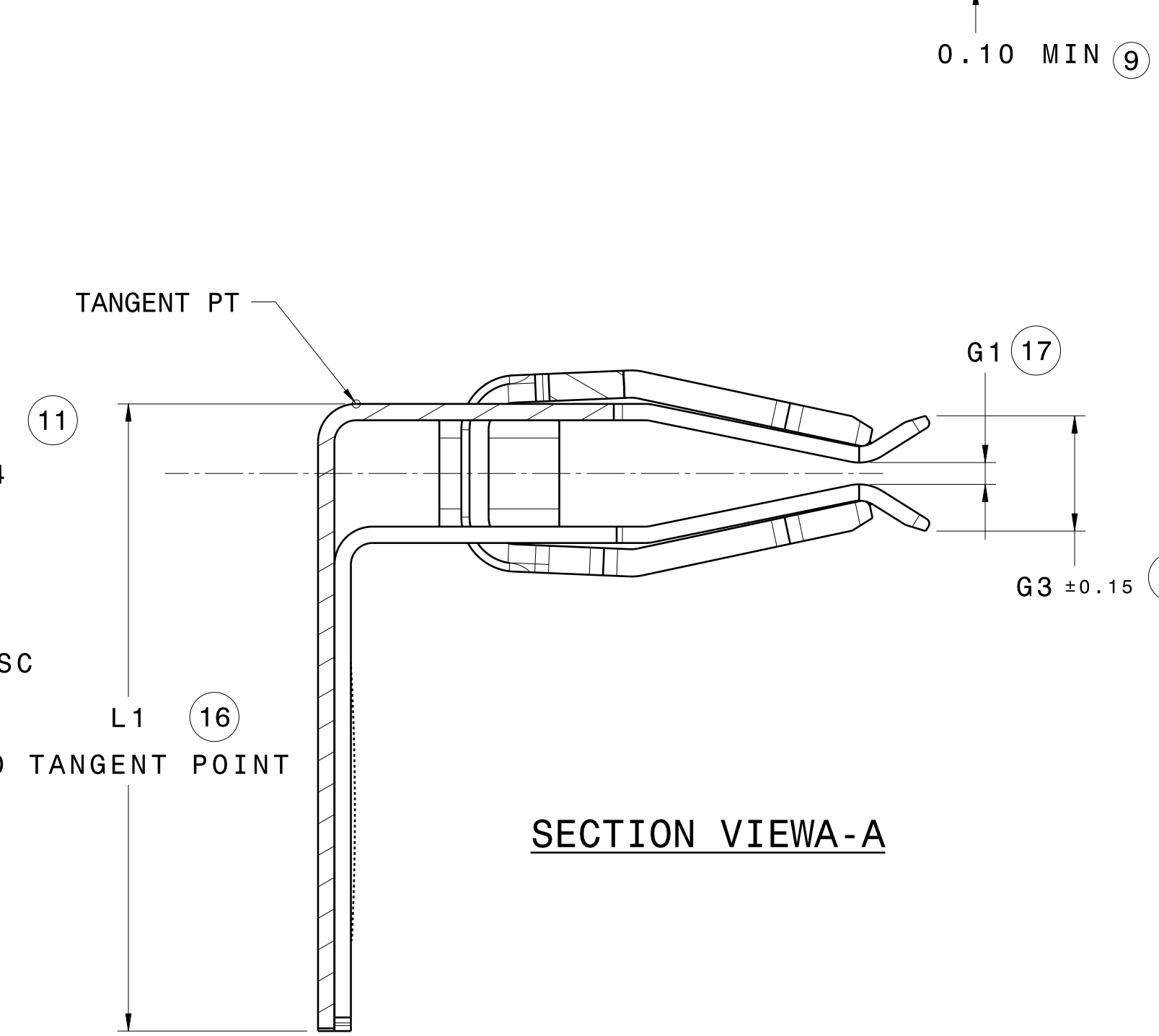
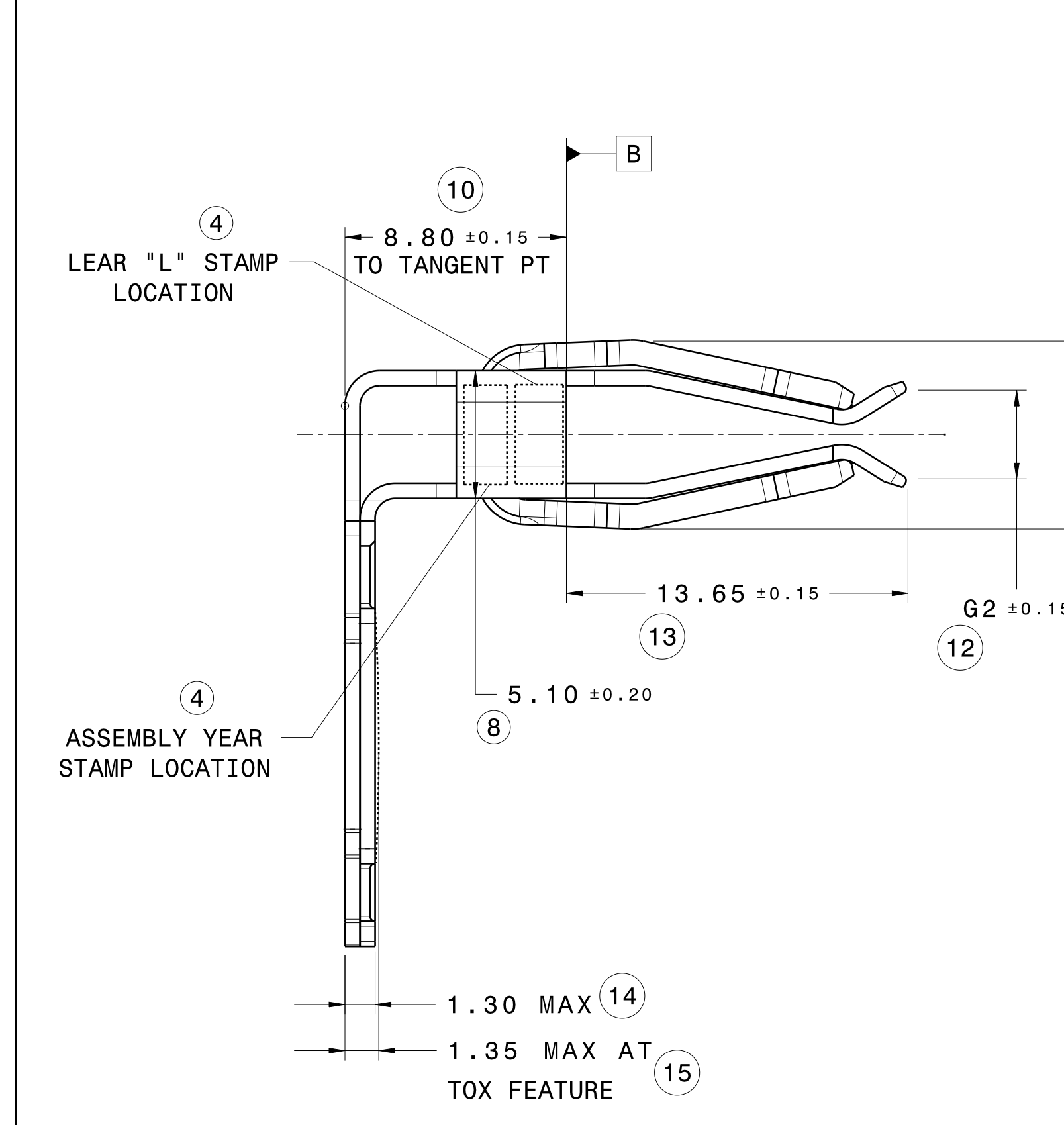
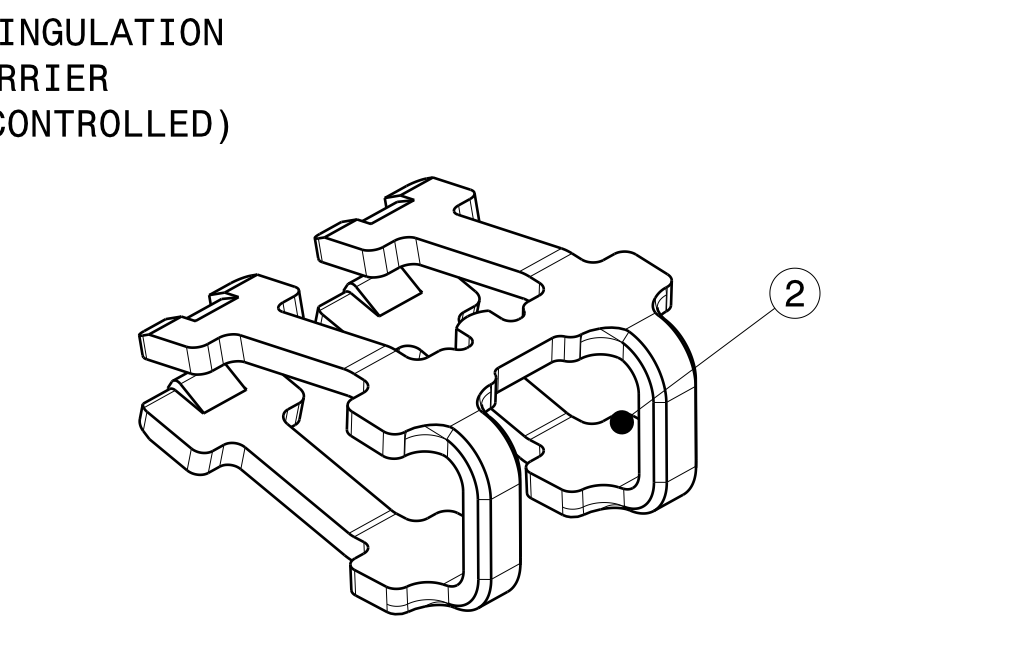
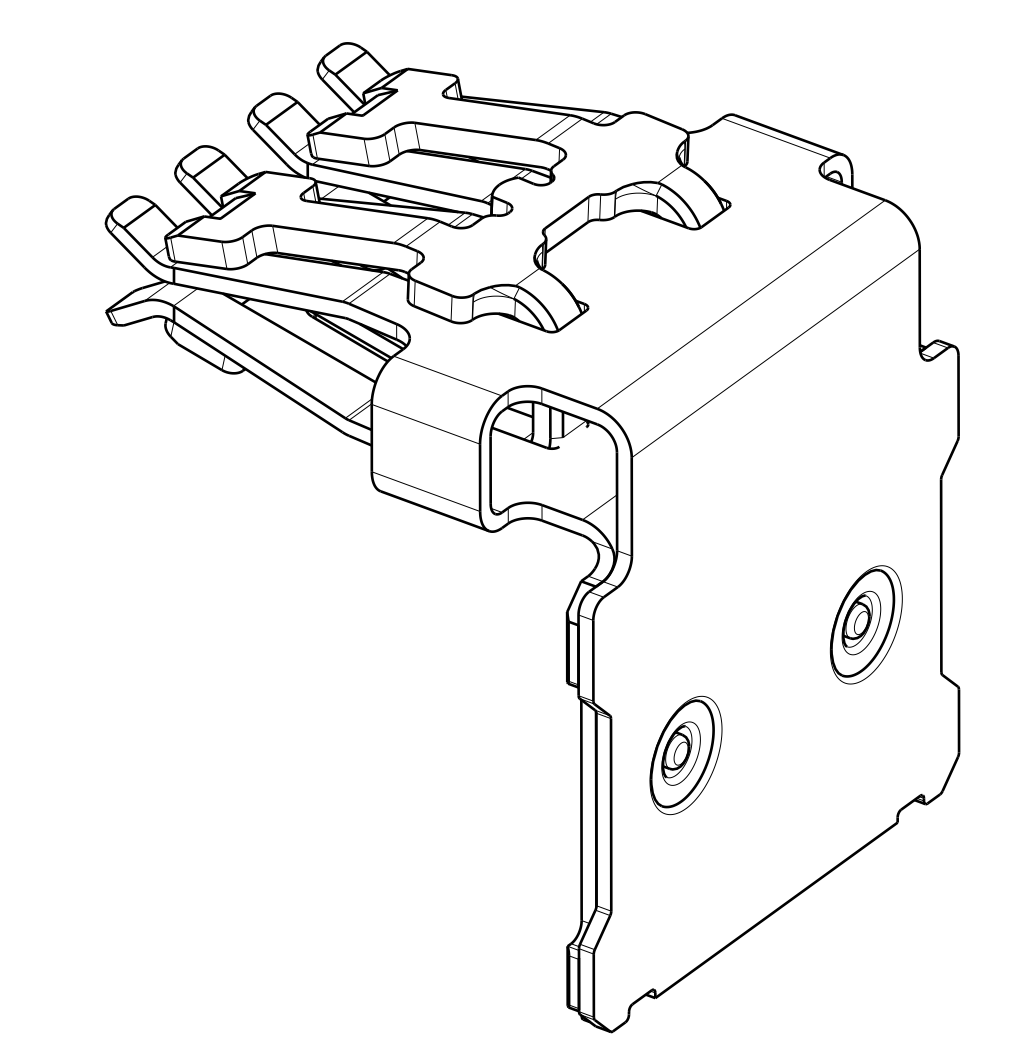
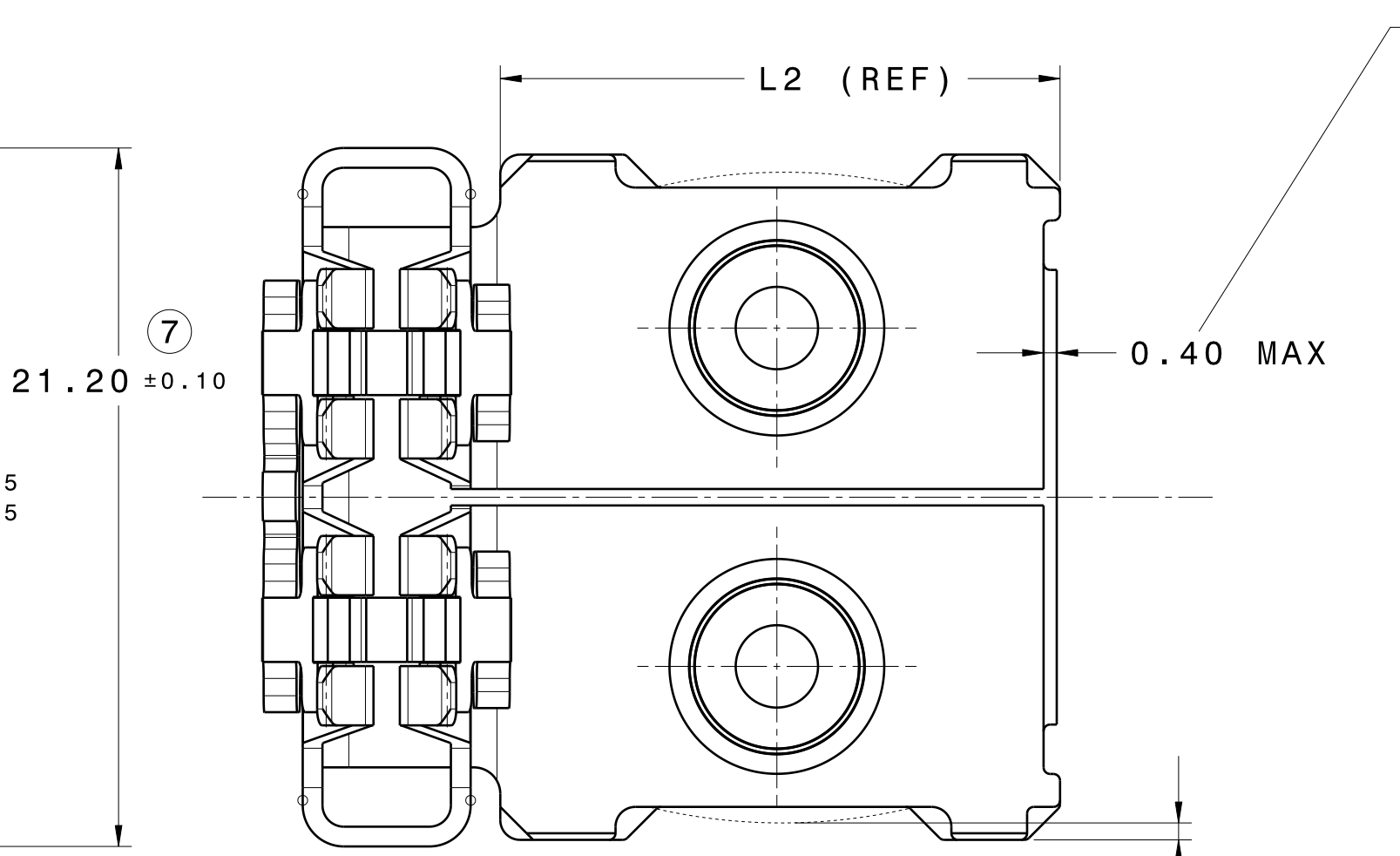
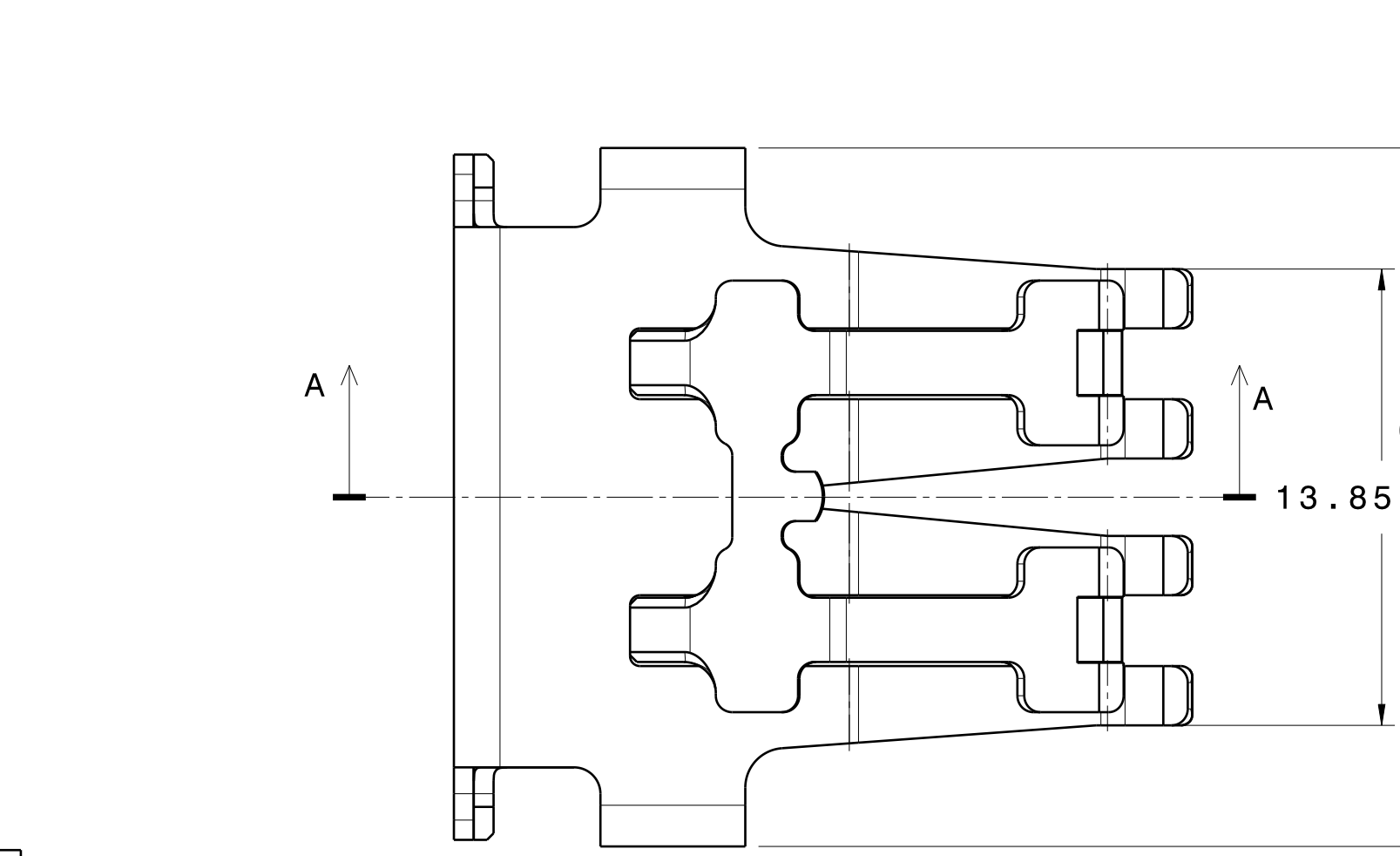
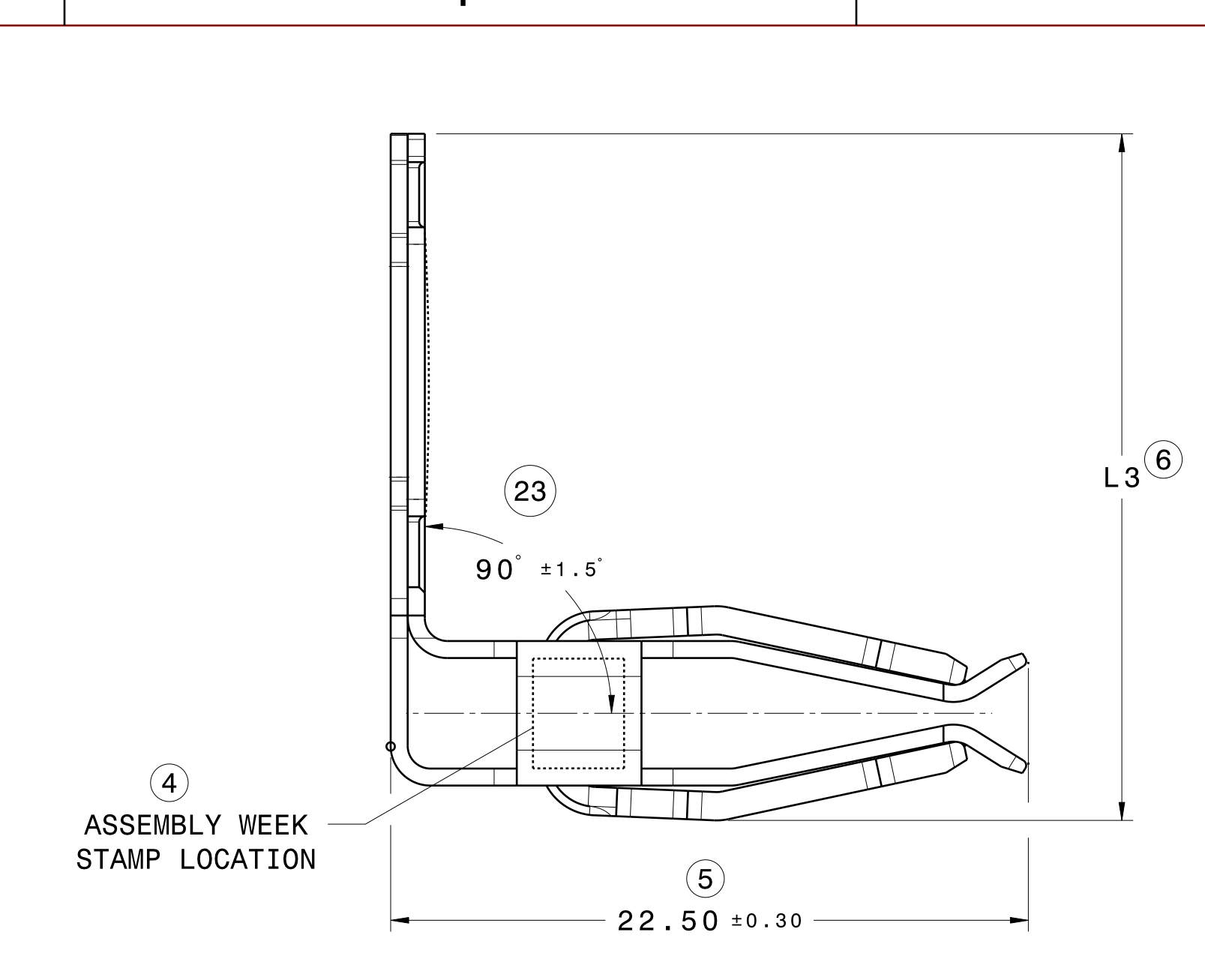
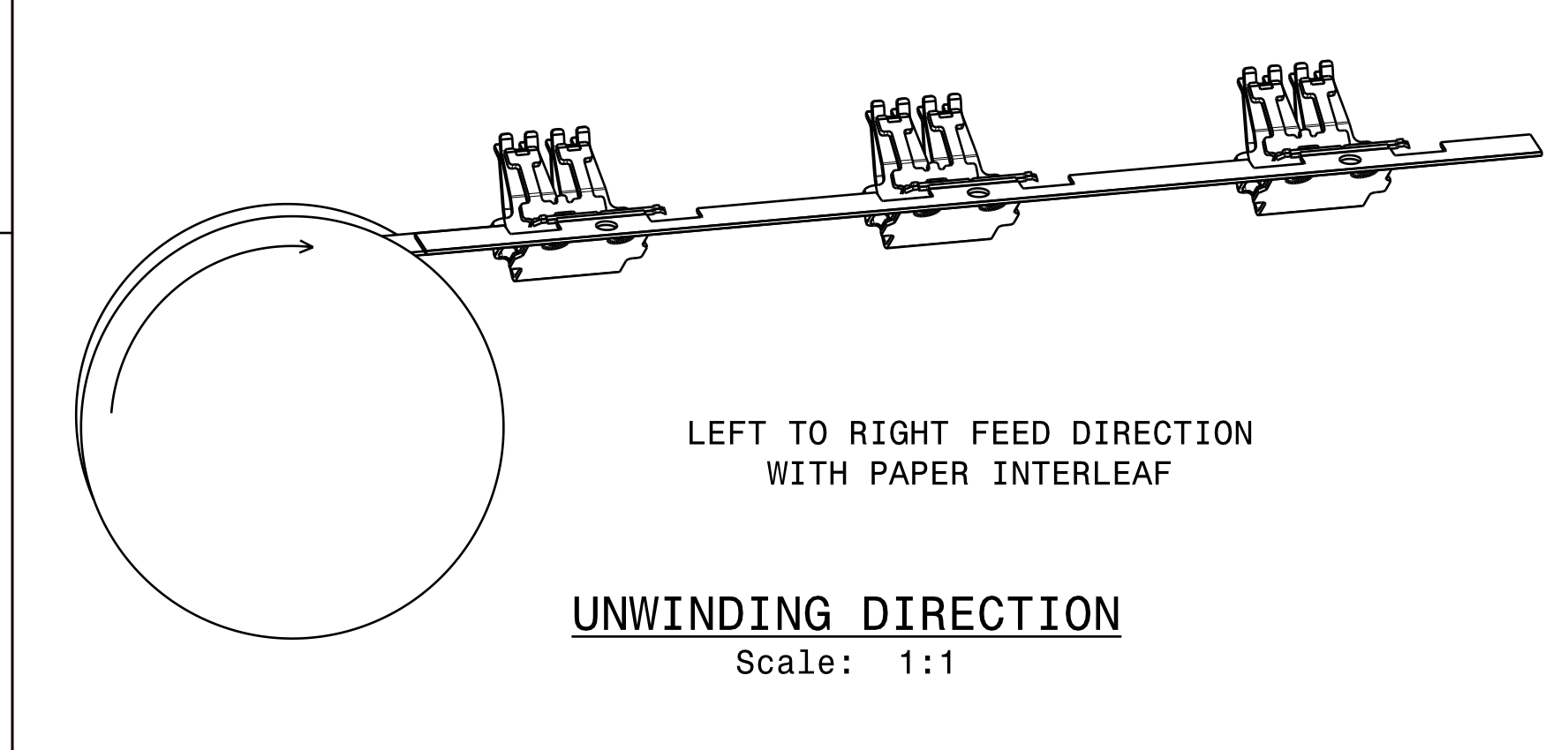


CHART 1

ASSEMBLY PN	ASSEMBLY DESCRIPTION	L1 ±0.30	L2 (REF)	L3 (±0.30)	G1	G2 ±0.15	G3 ±0.15	G4 ±0.25	WIRE SIZE	ITEM NUMBER	QTY	COMPONENT DESCRIPTION	MATERIAL
E02393800	14.5HC RA TERMINAL	23.00	17.00	24.23	0.00 +0.15 -0.00	2.80	3.49	7.55	≤ 70 mm ²	1	1	14.5HC RA TERMINAL BASE	Cu ALLOY
E02393800	14.5HC RA TERMINAL	23.00	17.00	24.23	0.00 +0.15 -0.00	2.80	3.49	7.55	≤ 70 mm ²	2	1	14.5HC TERMINAL SPRING	STAINLESS STEEL
E02678700	14.5HC RA 8G TERMINAL	23.00	17.00	24.23	0.80-0.20	3.80	4.59	7.55	≤ 70 mm ²	1	1	14.5HC RA TERMINAL BASE	Cu ALLOY
E02678700	14.5HC RA 8G TERMINAL	23.00	17.00	24.23	0.80-0.20	3.80	4.59	7.55	≤ 70 mm ²	2	1	14.5HC TERMINAL SPRING	STAINLESS STEEL
E02394200	14.5HC RAXL 8G TERMINAL	28.60	22.60	29.83	0.80-0.20	3.80	4.59	7.55	≤ 70 mm ²	1	1	14.5HC RAXL TERMINAL BASE	Cu ALLOY
E02394200	14.5HC RAXL 8G TERMINAL	28.60	22.60	29.83	0.80-0.20	3.80	4.59	7.55	≤ 70 mm ²	2	1	14.5HC TERMINAL SPRING	STAINLESS STEEL

- NOTES:**
1. SPRING COMPONENT MUST BE FIRMLY ATTACHED TO THE BASE TERMINAL IN ASSEMBLY. NO SLIDING IS ALLOWED IN ANY DIRECTION.
 2. PLATING IN TERMINAL BASE CONTACT AREA: SILVER PLATING OVER NICKEL.
 3. UNLESS OTHERWISE SPECIFIED ALL DRAWING VIEWS SHOW PN E02678700, 14.5HC RA 8G TERMINAL AFTER SINGULATION FROM TERMINAL CARRIER.
 4. FOR ULTRASONIC WELDING GUIDELINES, SEE USCAR 38. THE WELD VALIDATION MUST ALSO COMPLY WITH THE USCAR 38.
 5. FOR TERMINAL BLADE CONFIGURATION SEE DRAWING D00061263.

REV.	ZONE	DESCRIPTION	CS/REL. NO.	DATE	DESIGNER	CHECKER
01	XX	PRELIMINARY	XX-XXX	2013/05/20	A. LOPEZ	S. RAHMAN
02		RELEASE FOR PROTOTYPE	REL-141466	2013/07/15	A. LOPEZ	S. RAHMAN
AA		RELEASE FOR PRODUCTION	REL-141466	2013/11/15	P. CASTELLANI	S. RAHMAN
AB	H8	UPDATED CARRIER DIMENSIONS	REL-141466	2015/03/12	P. CASTELLANI	S. RAHMAN
	F8	ADDED DIM #5 (22.50)				
	F7	REMOVED DIM 22.50				
	D6	ADDED DIM #6 (5.10)				
	H7	REVERSED SPRING ORIENTATION				
	F5	ADDED CHART #3				
	F5	DIM #10 WAS 8.70				
	F5	DIM #13 WAS 13.85				
	E5	ADDED TANGENT PT				
	E1	CHART #1 UPDATED				
	E5	DIM #1 TOX WAS ±0.15				
AC	F1	L1 -0.30 WAS L1	CS-328921	2016/05/25	P. CASTELLANI	S. RAHMAN
	F4	5.10 ±0.20 WAS 5.10 ±0.15				
	C2	NOTE 1, NO SLIDING WAS NO ROCKING OR SLIDING				
	F4,F5	"L" AND YEAR STAMP LOCATION SWITCHED				
AD	C2	REVISED NOTE #4	CR-0108648	2019/01/04	A. GOODLAN	S. RAHMAN
	D1	REVISED CHART TO ADD WIRE SIZES				
	D1	DRAWING NO. WAS D00081163				
AE	F8	ADDED ANGULAR DIMENSION	CR-0113351	2019/07/31	C. SOCO	S. RAHMAN
	E1	REVISED CHART TOLERANCE				
	E5	DIMENSION #24 WAS 13.85 (REF.)				
	F5	DIMENSION #10 WAS WAS 8.85 ± 0.10.				
	E5	REMOVED DIM BALLONS FROM NOTES AND TABLE.				
AF	F7	RELOCATED DIMENSION #5.	CR-013171	2020/01/22	C. SOCO	S. RAHMAN
AG	F7	DIMENSION #23 WAS 91.5 ±1.5	CR-015703	2020/10/19	C. SOCO	S. RAHMAN
AH	E1	REVISED SPRING HEIGHT DIMENSION & TOLERANCES	CR-0117946	2021/06/21	A. BRUNO	S. RAHMAN
AI	E1	ADDED NOTE TO CHART 2				
AJ	E6	13.85 ±0.15 ±0.65 WAS 13.85 ±0.15	CR-017894	2021/06/25	R. BAGARTINO	S. RAHMAN

ANGLE PROJECTION	MATERIAL FINISH/SURFACE COLOR	SEE TABLE SEE TABLE N/A	WEIGHT CAD	VOLUME CAD	
NA			8.1 GRAMS	-	
NOT USED	SCALE	5:1			
20,21,22	START DATE	2013/07/17			
DRAWN	P. CASTELLANI	TITLE	14.5HC RA TERMINAL ASSEMBLY		
APPROVED	ENGR: S. RAHMAN CHECKER: A. BUTCHER APPROVER: B. BRANGI				
CAD DIRECTORY / LOCATION	SEM DOCUMENT ID / DRAWING NUMBER	REV	SHEET	OF	TYPE
SEM	E02393800-AJ-0000-CATDrawing	AJ	1	1	CG
LAST UPDATE	2021/06/25	E02393800			
LAST USED	24	CONFIDENTIAL - THIS DRAWING AND ALL INFORMATION DISCLOSED HEREIN ARE OWNED BY LEAR CORPORATION AND ARE NOT TO BE DISTRIBUTED OR DISSEMINATED IN ANY MANNER UNLESS EXPRESSLY AUTHORIZED IN WRITING BY LEAR CORPORATION			