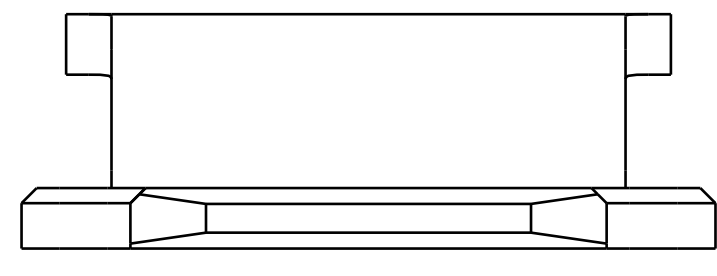
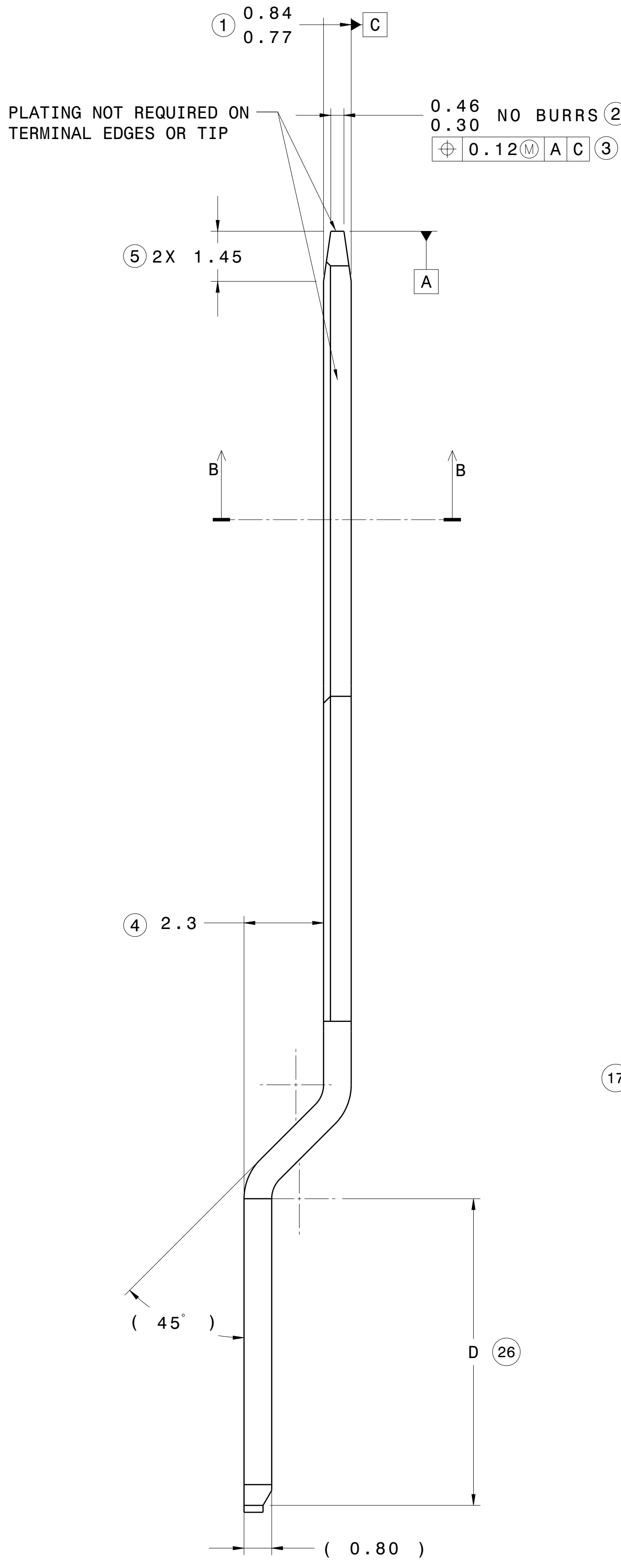


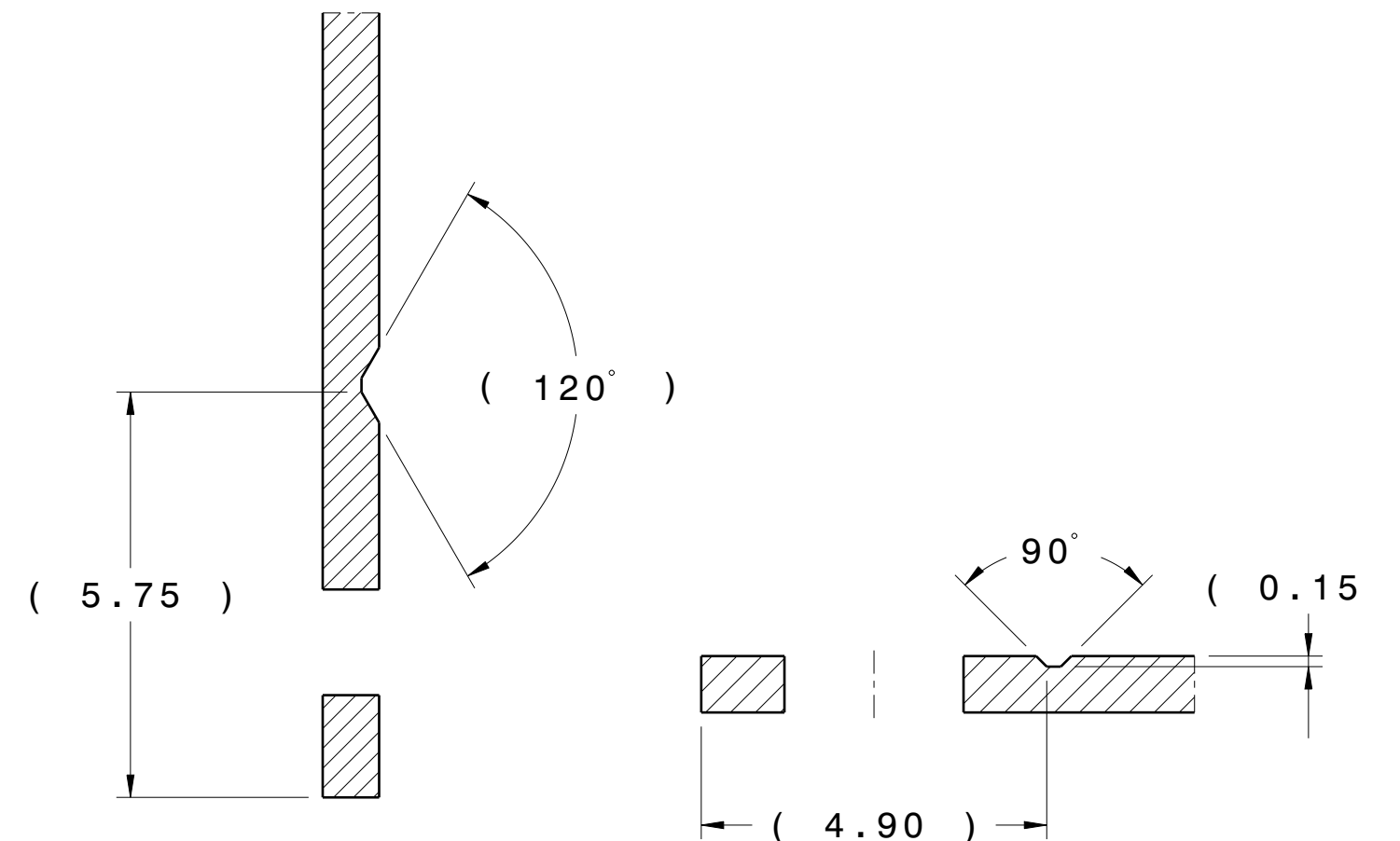
2X (0.20 X 45) COIN ON THE SURFACE OPPOSITE DIE PUNCH ENTRY

SECTION VIEW B-B



ISOMETRIC VIEW FOR GPN E02027900 Scale: 2:1

ISOMETRIC VIEW FOR GPN E24092700 Scale: 2:1



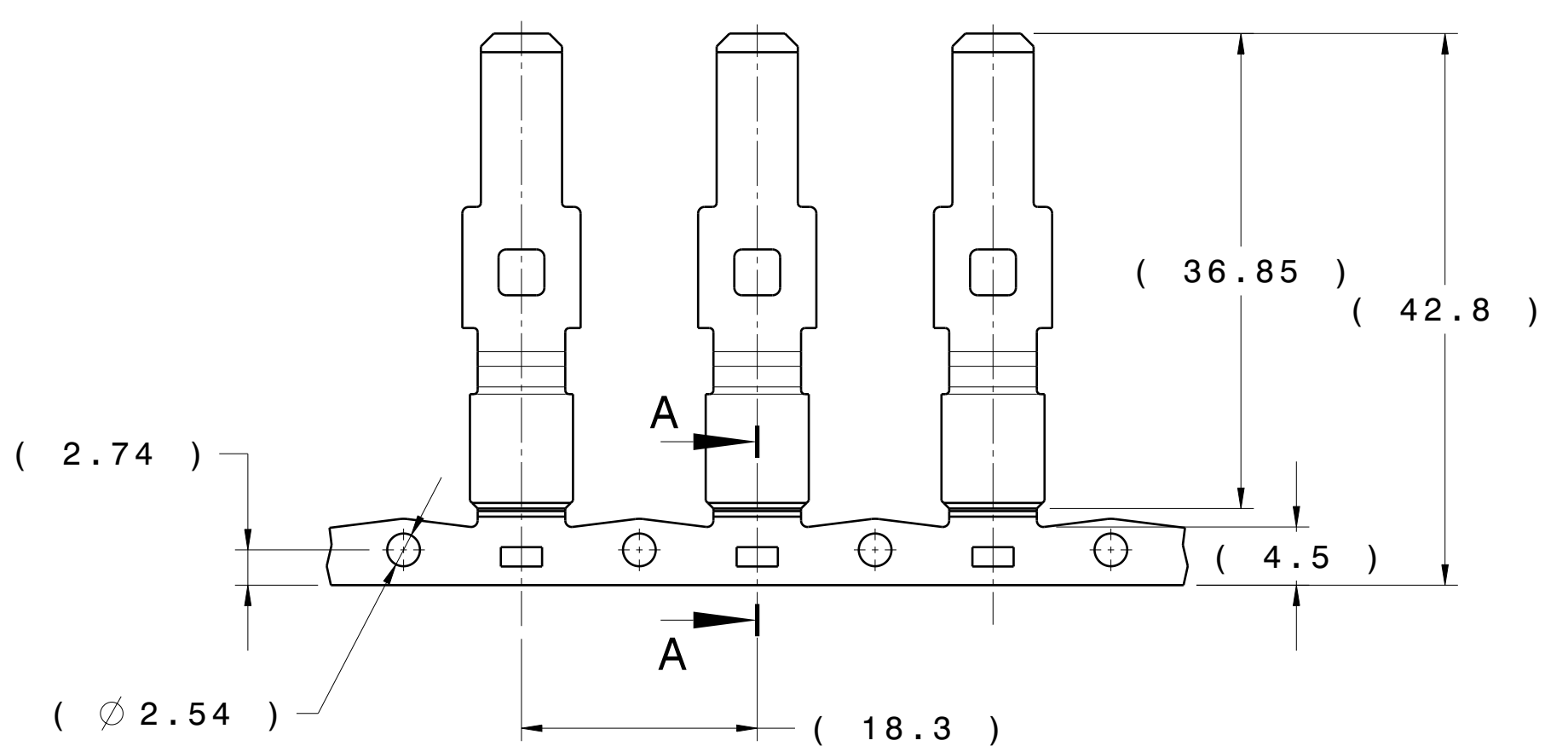
SECTION CUT A-A FOR E02027900 & E05609400

SECTION CUT C-C FOR E24092700

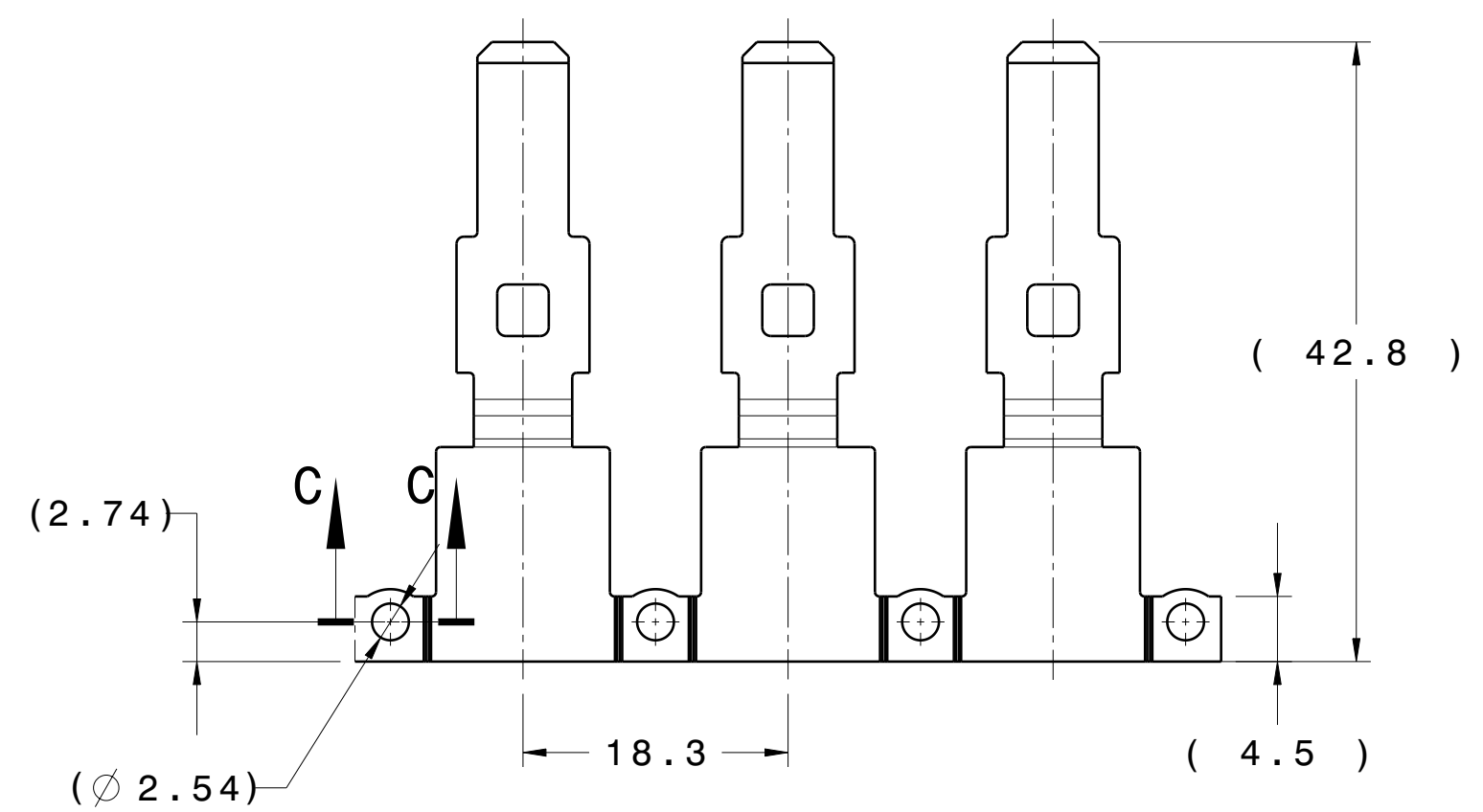
CARRIER DIMENSIONS 2:1

GRAIN DIRECTION

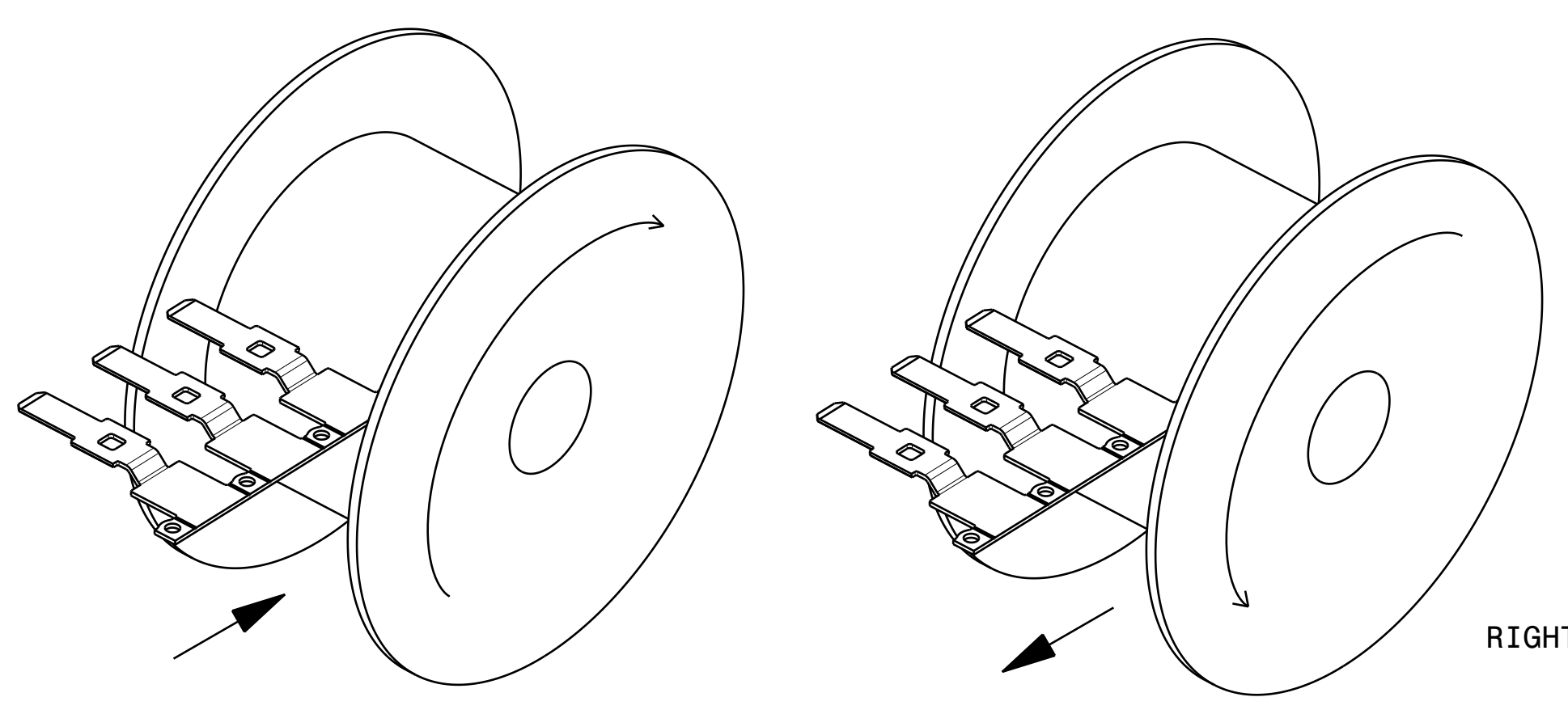
DIMENSIONS WITHOUT TOLERANCES ARE FOR REFERENCE ONLY



FOR PART NUMBER E02027900 AND E05609400 ONLY

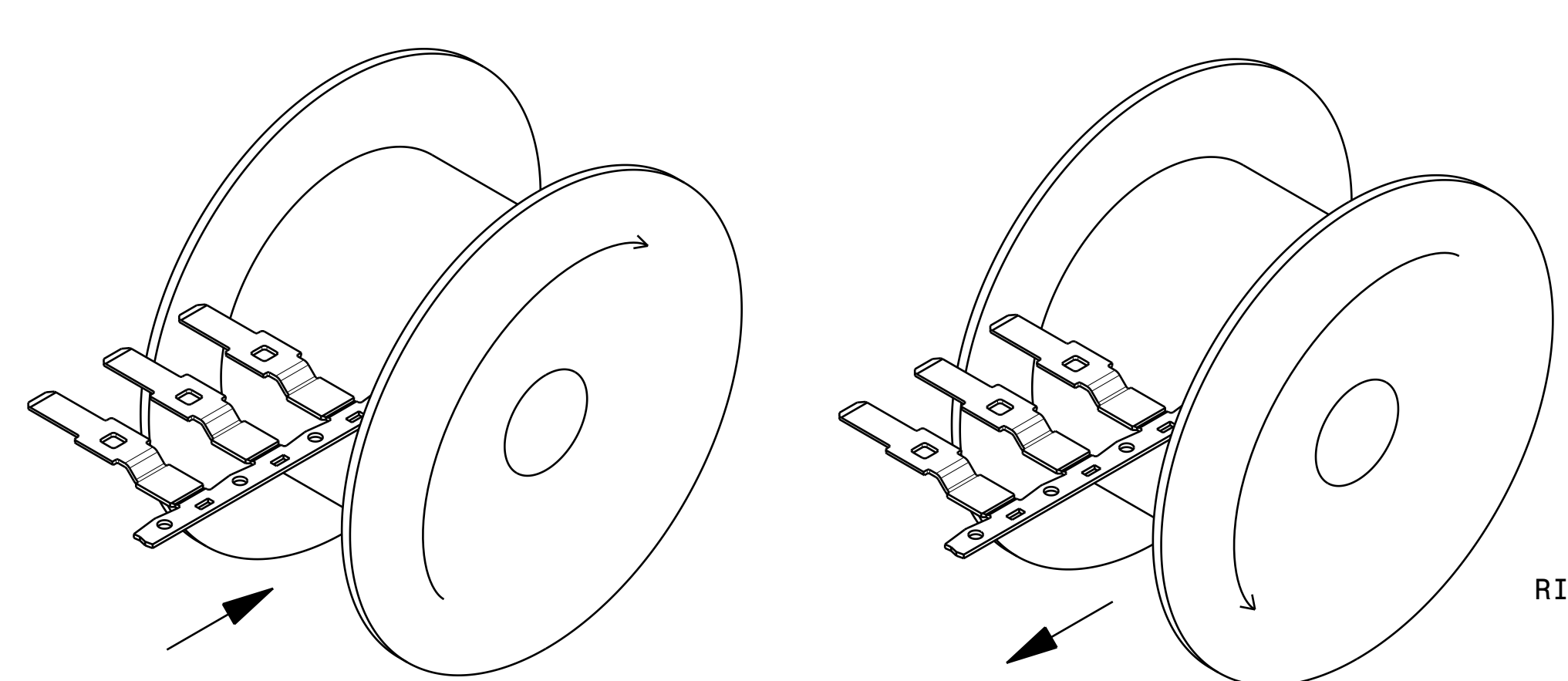


FOR PART NUMBER E24092700 ONLY



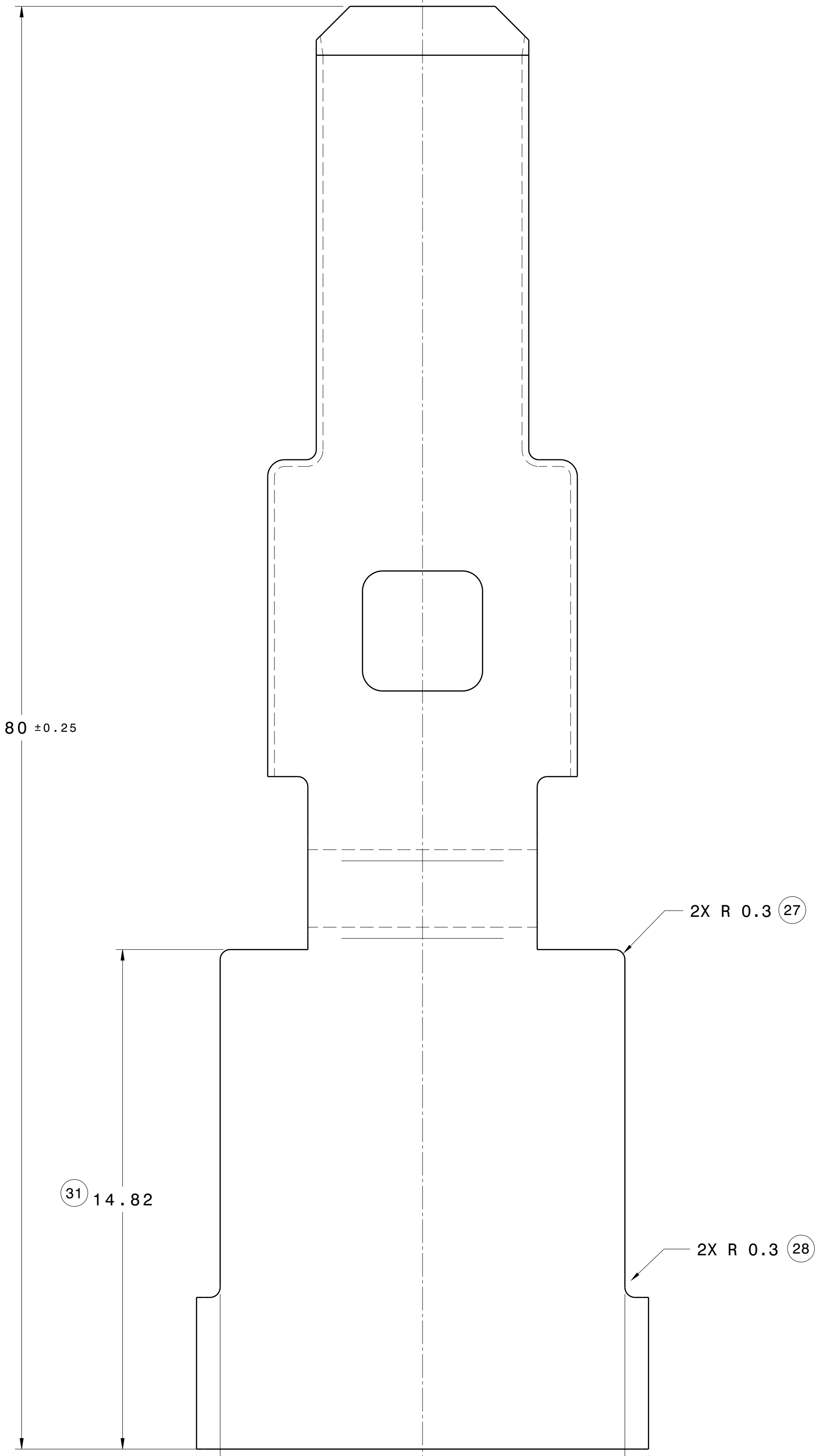
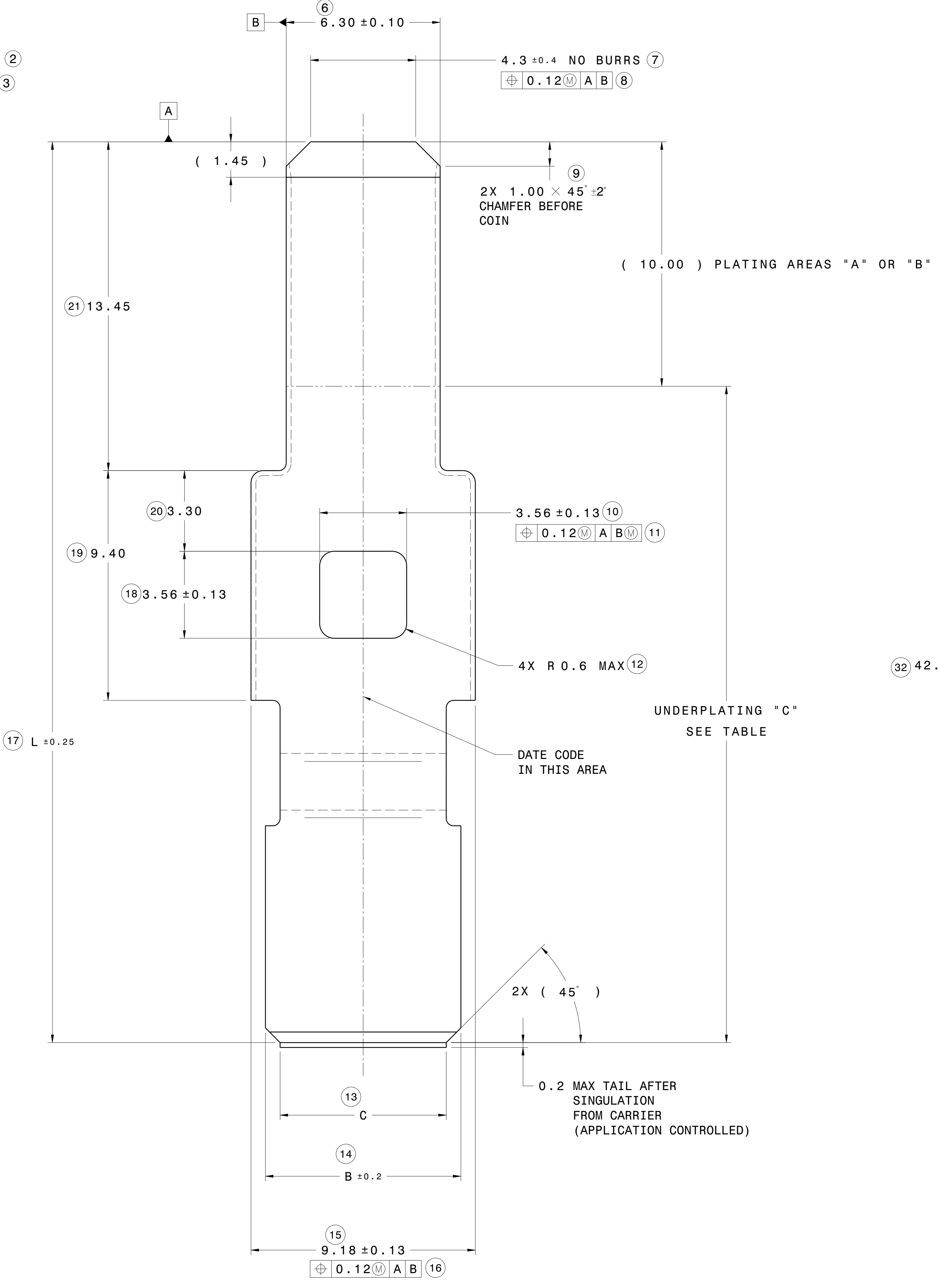
WINDING DIRECTION FOR E24092700

UNWINDING DIRECTION FOR E24092700



WINDING DIRECTION FOR E02027900 & E05609400

UNWINDING DIRECTION FOR E02027900 & E05609400



AFTER SINGULATION FROM CARRIER. APPLICATOR CONTROL DIMENSION FOR THE HARNESS MAKERS

FOR GPN E24092700 SAME AS E02027900 EXCEPT AS SHOWN

NOTES:

- MATERIAL: COPPER
MATERIAL THICKNESS: 0.80 ± 0.025
- FINISH:
(A) SELECTIVE SILVER PLATING OVER NICKEL.
(B) SELECTIVE REFLOW TIN OVER NICKEL.
- GENERAL TOLERANCES:
3.1 ONE PLACE DIM = ± 0.3
3.2 TWO PLACE DIM = ± 0.15
3.3 ANGULAR TOLERANCE DIM = ± 3'
- COMPLETE DIMENSIONAL LAYOUT AND MATERIAL CERTIFICATION IS MANDATORY AT THE INITIAL SAMPLE SUBMISSION.
- PARTS MUST BE SHIPPED FREE FROM ANY MANUFACTURING AGENT (CUTTING FLUIDS, OILS, RESINS, WAXES, OXIDATION, SOLVENTS, AND CHEMICALLY INDUCED OR EXTERNALLY DEPOSITED RESIDUES) NO DEBRIS (PLASTIC, METAL) ALLOWED IN SHIPPING PACKAGE.
- PART MUST BE STAMPED FREE FROM ANY BLEMISHES THAT MAY AFFECT THE APPEARANCE, FIT, FUNCTION, HANDLING OR ASSEMBLY OF THE PART (TOOL MARKS, EJECTOR MARKS, IMPERFECTIONS, ETC.)
- SHIPPING PACKAGING MUST NOT DAMAGE PRODUCT DURING TRANSIT.

| REV. | ZONE | RELEASED | CS/REL. NO. | DATE | DESIGNER | CHECKER |
|-------|------|--|-------------|------------|---------------|-----------|
| XX | | | | | | |
| F4 | | DATE CODE NOTE ADDED | CS 241515 | 2014/08/28 | P. CASTELLANI | M. BLOK |
| AB | | ADDED TIN PLATING TO NOTE 2 CHART ADDED | CS 304568 | 2015/04/15 | P. CASTELLANI | M. BLOK |
| A1 | | DRAWING NUMBER WAS E02027900.DWG | | | | |
| AC | | UNDERPLATING "C" ADDED TO TABLE | CS 310478 | 2015/07/21 | P. CASTELLANI | M. BLOK |
| F6 | | REVISED PLATING ZONE | | | | |
| HB | | SECTION B-B ADDED | | | | |
| J3 | | 2 X WAS 3 X | | | | |
| Q3 | | 10.20 WAS 7.25 | | | | |
| F6 | | (10.00) WAS (9.35) | | | | |
| J5 | | 2.3 WAS 2.25 | CS 320951 | 2016/02/22 | P. CASTELLANI | M. BLOK |
| H4 | | DIM (8.87) WAS (8.92) | | | | |
| AE | | 1.00 X 45° WAS 1.00 X 10.15 | CS 333436 | 2016/07/15 | P. CASTELLANI | M. BLOK |
| F7/F2 | | 0.15 TP WAS 0.10; DIM 4.-30.4 WAS 3.-90.1 | | | | |
| J7 | | 2 X 145 WAS 0.9 10.15 | | | | |
| H7 | | 2 WAS 0.2 10.1 | | | | |
| Q6 | | REMOVED R 0.4 R 10.3 | | | | |
| AF | | C1 ADDED PART NO. E24092700 FOR LARGER WIRE. | ON-0112492 | 2020/02/04 | C. BODD | S. RAHMAN |
| H4 | | DIM #28 WAS REFERENCE DIM. | | | | |
| D1 | | CHANGED DIM. R, C, D, & L. | | | | |
| | | REMOVED CHAMFER FROM THE WELD PAD. | | | | |
| AG | | REDESIGNED THE WELD TAB FOR GPN E24092700 TO E2/F2 | CH-0118590 | 2021/11/19 | M. FRENDEL | S. RAHMAN |
| | | INCREASE THE WELD TAB LENGTH BY 4.95. | | | | |

| | | | |
|---------------------------------|---|-----------------|-----------------------|
| ANGLE PROJECTION | MATERIAL: SEE NOTES | WEIGHT CAD: N/A | VOLUME CAD: SEE NOTES |
| SCALE: 10:1 | FINISH/SURFACE COLOR: SEE NOTES | | |
| START DATE: 2014/08/28 | | | |
| DRAWN: P. CASTELLANI | | | |
| APPROVED: E. BODD | 21557 TELEGRAPH ROAD SOUTHFIELD, MI 48033 | | |
| DWG FILE NAME: E02027900-AG.DWG | CAD DIRECTORY / LOCATION: SEM MODEL FILE NAME: E02027900E24092700.CATPART | | |
| LAST UPDATE: 2021/11/19 | SEM DOCUMENT ID / DRAWING NUMBER: E02027900 | REV: AG | SHEET OF: 1 1 |
| TYPE: CG | | | |

CONFIDENTIAL - THIS DRAWING AND ALL INFORMATION DISCLOSED HEREIN ARE OWNED BY LEAR CORPORATION AND ARE NOT TO BE DISTRIBUTED OR DISSEMINATED IN ANY MANNER UNLESS EXPRESSLY AUTHORIZED IN WRITING BY LEAR CORPORATION